

SPECIAL TOOLS

For the commercial vehicle sector



CONTENT

CHASSIS

Page 5-36



BRAKES

Page 37-44



ENGINES

Page 45-64



WHEELS

Page 65-68



BODYWORK

Page 69-76



UNIVERSAL

Page 77-111



THE RIGHT SPECIAL TOOL FOR YOUR COMMERCIAL VEHICLE



CHASSIS



Ball joint pin ejector set

3 pieces. For removing ball joint pins from steering links, steering knuckles and stabilisers, including reinforced construction for transporters.

- Suitable for passenger cars and vans
- Highly suitable for confined mounting positions



Application area

Audi, VW, BMW, Citroen Jumper, Fiat Ducato, Peugeot Boxer, MB Sprinter, Renault, Rover, Saab, Volvo, buses, agricultural machinery

Art. no.	1952 001 009
Number of pieces	3 PCS
Product weight (per item)	3390 g
P. Qty./unit	1

Contents for art. no.	
1952 001 009	Ball joint pin ejector: 1 x Max. grip range: 55 mm, 1 x Max. grip range: 55 mm, 1 x Max. grip range: 63 mm

Ball joint pin ejector

To press out the ball joint pins from tie rods, steering knuckles and stabilisers.

Fork width (inner)	Max. grip range	Suitable for vehicle type	Suitable for vehicle manufacturer	Product weight (per item)	Art. no.	P. Qty./unit
23 mm	55 mm	Jumper L1, Jumper L2, Jumper L3, Jumper L4, Sprinter (from 2006), Boxer L1, Boxer L2, Boxer L3, Boxer L4, Ducato L1, Ducato L2, Ducato L4, Ducato L5	Audi, Volkswagen, BMW, Citroen, Fiat, Peugeot, Mercedes-Benz, Renault, Rover, Saab, Volvo	800 g	1952 001 010	1
28 mm	55 mm	Audi A4, A3, A6	Audi, Volkswagen, Mercedes-Benz	850 g	1952 001 011	1
34 mm	63 mm	Sprinter (from 2006), Movano L1 L2 L3 L4	Mercedes-Benz, Volkswagen, Opel/Vauxhall	1250 g	1952 001 012	1



Drive type	Outer hexagon
-------------------	---------------



Ball joint pin ejector

With bell shape

- With spindle suitable for impact screwdriver
- Pressure piece in the spindle rotatable

Application area

- 1952001277 and 1952 001 278: Light truck 3.5 - 8.8 tonnes
- 1952001279: Trucks, e.g. MB 1424, Actros2

Fork width (inner)	Max. clamping depth	Width across flats	Product weight (per item)	Art. no.	P. Qty./unit
30 mm	58 mm	19 mm	1000 g	1952 001 277	1
32 mm	90 mm	26 mm	2800 g	1952 001 278	1
39 mm	58 mm	26 mm	3000 g	1952 001 279	1



Drive type	Outer hexagon
Surface	Burnished

Joint pin ejector

Heavy-duty design — high load-bearing capacity

- For pressing out the ball joint bolt on thrust and tie rods
- With grease hydraulic spindle, 12 t

Application area

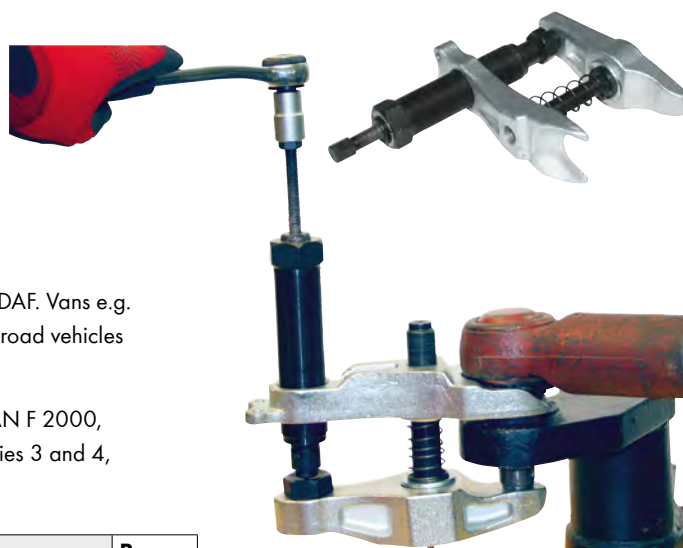
- Art. no. 1952 001 076

MB e.g. ATEGO up to 17 tonnes, MAN M 2000, Iveco, Renault, Scania, Volvo, DAF. Vans e.g. VW T4, Ford Transit, MB Sprinter, Fiat Ducato, heavy passenger cars such as off-road vehicles

- Art. no. 1952 001 077

MB e.g. Actros, Atego from 18 tonnes, SK, O405, O405 - N (low floor bus), MAN F 2000, TGA, low-floor articulated bus, Iveco Euro-Star, Euro-Tech, Turbo-Star, Scania series 3 and 4, coaches on Scania chassis e.g. Icarus, DAF, Renault, Volvo

Fork width (inner)	Max. grip range	Max. loading weight	Product weight (per item)	Art. no.	P. Qty./unit
36 mm	90 mm	12 t	4300 g	1952 001 076	1
45 mm	115 mm	20 t	5400 g	1952 001 077	1



Drive type	Outer hexagon
-------------------	---------------



Tie-rod end extractor Commercial vehicle

For the removal of track and steering rod ends for all commercial vehicles and vans.

- Teardrop-shaped slot in the outer shell prevents slipping during use
- Suitable for impact screwdriver
- Non-slip, patented impact guide



Art. no.	1952 001 400
Depth	70 mm
Width across flats	36 mm
Max. diameter	80 mm
Drive type	Hexagon
Length	85 mm
Product weight (per item)	1800 g
Width of mouth	32.8 mm
P. Qty./unit	1

Tie rod ball joint wrench

For safe and damage-free disassembly and assembly of almost all tie rods thanks to self-locking gripper pieces.

- For tie-rod ends with a diameter of 42–46 mm,
- Can be used even in confined spaces
- Can be used with a torque wrench according to the manufacturer specifications



Art. no.	1952 001 428
Min. grip range	42 mm
Max. grip range	46 mm
Width across flats	30 mm
Product weight (per item)	2100 g
P. Qty./unit	1

Application area

Suitable for all current Mercedes passenger cars and transporters as well as VW Crafter.

Tie rod ball joint wrench set

3 pieces. For safe and damage-free disassembly and assembly of almost all tie rods thanks to self-locking gripper pieces even in confined spaces.

- Scope of delivery
 - 1 actuating tool
 - 1 gripping piece each Ø 32–37 mm and 37–42 mm



Art. no.	1952 001 025
Width across flats	30 mm
Min. diameter	32 mm
Max. diameter	42 mm
Drive	1/2 inch
Drive type	Internal square
Length	435 mm
Type of vehicle	Passenger car and transporter
Number of pieces	3 PCS
Product weight (per item)	5600 g
P. Qty./unit	1

Application area

Passenger car/van

Drive shaft socket wrench set

6 pieces. For disassembly and assembly of the drive shaft nuts and cardan shaft.

- Scope of delivery:
 - 1 each of socket wrench insert sizes 30 mm, 32 mm and 36 mm (bi-hex)
 - 1 each of power screwdriver insert sizes 14 mm, 17 mm, and 19 mm (hexagon socket) for work on drive shafts, long impact screwdriver design



Art. no.	1952 001 019
Number of pieces	6 PCS
Drive	1/2 inch
Product weight (per item)	1840 g
Tip type	Twelve-sided head, Outer hexagon
Width across flats	30 mm, 32 mm, 36 mm, 14 mm, 17 mm, 19 mm
P. Qty./unit	1

Application area

Universal, agricultural machinery

Cardan shaft impact socket wrench set

9 pieces For disassembly and assembly of the drive shaft nuts and cardan shafts.

- Scope of delivery:
 - 1 each of socket wrench insert sizes 24 mm, 27 mm, 30 mm, 32 mm, 34 mm, and 36 x 85 mm (for outdoor use, bi-hexagonal)
 - 1 each of socket wrench insert sizes 14 mm, 17 mm and 19 x 43 mm (for indoor use, hexagonal)



Art. no.	1952 001 020
Number of pieces	9 PCS
Drive	1/2 inch
Product weight (per item)	3500 g
Length	85 mm
Length 2	43 mm
Tip type	Outer hexagon, Twelve-sided head
Width across flats	24 mm, 27 mm, 30 mm, 32 mm, 34 mm, 36 mm, 14 mm, 17 mm, 19 mm
P. Qty./unit	1

Application area

VW (Golf IV, Polo, Passat etc.), Audi, Seat, Skoda, Opel, BMW, Mercedes, Renault, Toyota, agricultural machinery

3/4-inch impact socket wrench insert for tie-rod lever/steering gear

Especially suitable for safe and damage-free disassembly and assembly of almost all popular Iveco tie-rod levers and steering gears.



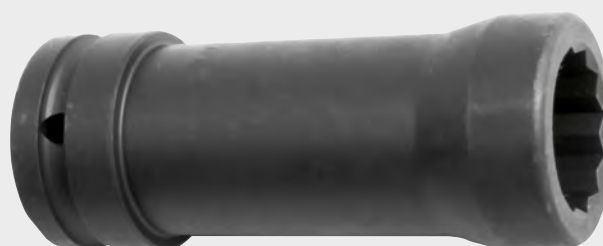
Drive	3/4 inch
Drive type	Internal square
Tip type	TX head
Length	60 mm
Product weight (per item)	480 g

Tip size	Art. no.	P. Qty./unit
E30	1952 001 373	1
E32	1952 001 374	1

Impact socket wrench bit

Specially designed for spring bow screw connections, as well as for air bellows on the pneumatic suspension for MB trucks.

- Bronzed for spring bow screw connections



Art. no.	1952 001 214
Drive	3/4 inch
Drive type	Internal square
Tip type	Twelve-sided head
Length	112 mm
Width across flats	27 mm
Product weight (per item)	450 g
P. Qty./unit	1

Application area

MB trucks, Actros with air suspension, agricultural machinery

Power screwdriver bit Hexagon

For disassembly and assembly of the retaining bolt of the upper suspension arm and the brake calliper bolt on the rear axle.



Application area

MAN TGA and F2000, Citaro, MB Actros

Drive	3/4 inch
Surface	Burnished

Tip size	Length	Width across flats	Product weight (per item)	Art. no.	P. Qty./unit
12 mm	76 mm	12 mm	430 g	1952 001 174	1
14 mm	76 mm	14 mm	450 g	1952 001 175	1
14 mm	130 mm	14 mm	430 g	1952 001 201	1
17 mm	76 mm	17 mm	450 g	1952 001 176	1
17 mm	170 mm	17 mm	500 g	1952 001 200	1
19 mm	76 mm	19 mm	500 g	1952 001 177	1

Cardan shaft socket wrench CV

Specially adapted and shock-resistant design for disassembly and assembly of cardan shafts.



Art. no.	1952 001 017
Drive	3/4 inch
Drive type	Internal square
Width across flats	41 mm
Tip type	Outer hexagon
Product weight (per item)	650 g
P. Qty./unit	1

Application area

Citroen C25, Fiat Ducato, Peugeot J5, agricultural machinery

Axle shaft socket wrench insert CV

For disassembly and assembly of axle shafts.



Application area

Ford Transit from MY 1991 axle no. 34, agricultural machinery

Art. no.	1952 001 018
Drive	3/4 inch
Width across flats	57 mm
Tip type	Twelve-sided head
Length	70 mm
Product weight (per item)	1500 g
P. Qty./unit	1

Axle nut wrench flat/oval

For flat/oval axle nuts on BPW axles and the 9-, 10- and 12-tonne ECO axles.

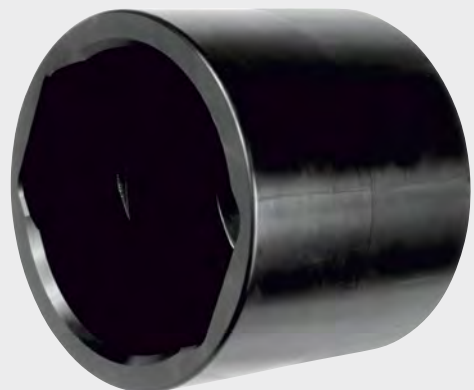


Drive type	Outer hexagon
Width across flats 2	36 mm

Width across flats	Product weight (per item)	Art. no.	P. Qty./unit
65 mm	1300 g	1952 001 078	1
80 mm	1400 g	1952 001 079	1

Wheel cap and axle nut wrench Lathed

Lathed design for disassembly and assembly of flat oval wheel caps and axle nuts.



Drive	3/4 inch
Drive type	Internal square

Width across flats	Product weight (per item)	Art. no.	P. Qty./unit
95 mm	1600 g	1952 001 080	1
110 mm	2000 g	1952 001 081	1

Application area

- 1952001080: BPW 9 t and 12 t axles/ECO 10 t axle
- 1952001081: BPW 12 t axle



Hubcap axle nut wrench, 3/4 inch Welded

Welded design for disassembly and assembly of flat oval wheel caps and axle nuts

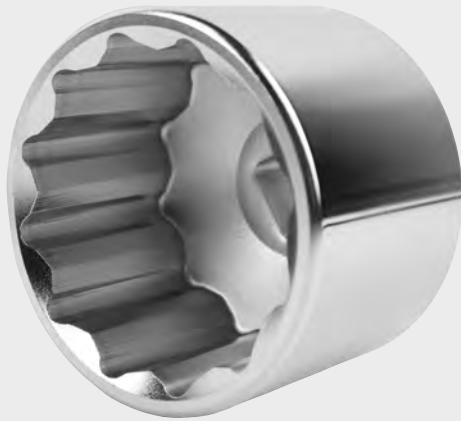
Drive	3/4 inch
Drive type	Internal square

Width across flats	Product weight (per item)	Art. no.	P. Qty./unit
65 mm	900 g	1952 001 082	1
80 mm	1100 g	1952 001 083	1
85 mm	1100 g	1952 001 084	1
95 mm	1600 g	1952 001 085	1
110 mm	1700 g	1952 001 086	1
120 mm	2700 g	1952 001 087	1



3/4-inch socket wrench insert WS65

Especially for the safe and damage-free disassembly and assembly of almost all popular Iveco Daily wheel bearing nuts.



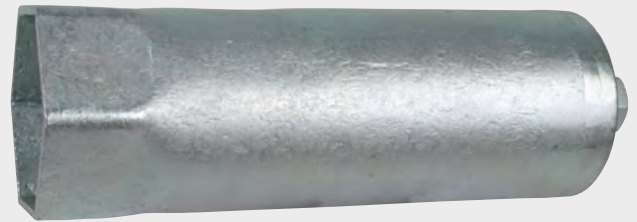
Art. no.	1952 001 371
Drive	3/4 inch
Tip type	Twelve-sided head
Width across flats	65 mm
Length	80 mm
Surface	Chrome plated
Product weight (per item)	1785 g
P. Qty./unit	1

Axle nut impact wrench for axles without guide collar Hexagon

For disassembly and assembly of axle hubs with brake drums and wheels.

Application area

DAF XF 105 and similar, Kässbohrer/Setra buses, Renault Premium



Art. no.	1952 001 094
Drive type	Outer hexagon
Width across flats	105 mm
Width across flats 2	36 mm
Product weight (per item)	8500 g
P. Qty./unit	1

Axle nut wrench Hexagon

Special insert for the upper sealing cap and axle nut.

Application area

- 1952001106: Renault
- 1952001308 and 1952001312: DAF/Volvo
- 1952001309 and 1952001310: Volvo
- 1952001307 and 1952001311: Scania



Width across flats	Suitable for vehicle manufacturer	Product weight (per item)	Art. no.	P. Qty./unit
77 mm	Renault	3400 g	1952 001 106	1
80 mm	DAF, Volvo	1600 g	1952 001 312	1
95 mm	Volvo	4800 g	1952 001 309	1
105 mm	Volvo	5100 g	1952 001 310	1

Drive	3/4 inch
Drive type	Internal square

Axle nut impact wrench for axles with and without guide collar Hexagon

For disassembly and assembly of axle hubs with brake drums and wheels.

Application area

- 1952001090: SAF trailer axle
- 1952001091: IVECO - Cargo HA '98
- 1952001093: DC Dicos trailer axle from MY 2005 with compact bearing hub unit (DB no. W749589000900)
- 1952001092: IVECO Eurocargo - HA type 120 E15 ,98 with double nut
- 1952001094: Kässbohrer/Setra buses
- 1952001406: All IVECO axles with wrench size 92



Drive type	Outer hexagon
Width across flats 2	36 mm

Width across flats	Suitable for vehicle manufacturer	Product weight (per item)	Art. no.	P. Qty./unit
85 mm		1800 g	1952 001 090	1
90 mm		2100 g	1952 001 091	1
92 mm	Iveco	2100 g	1952 001 406	1
95 mm		2800 g	1952 001 093	1
98 mm		2300 g	1952 001 092	1

Axle nut wrench CV 6-pt.

For disassembly and assembly of axle nuts.



Art. no.	1952 001 108
Drive	3/4 inch
Drive type	Internal square
Width across flats	95 mm
Product weight (per item)	2600 g
P. Qty./unit	1

Application area
IVECO EUROCARGO

Axle nut wrench for axles with guide collar

For disassembly and assembly of axle nuts.

Application area

IVECO Eurotech Cursor, Stralis rear axle



Art. no.	1952 001 089
Drive	36 mm
Drive type	Hexagon
Width across flats	110 mm
Product weight (per item)	2500 g
P. Qty./unit	1

Axle nut impact wrench Hexagon

For disassembly and assembly of axle nuts

- Heavy-duty design for controlled rotation angle
- Drive size 32 for preflightening

Application area

SAF axles, 9 t RSM 9042 SKRS/RZ 9042, 11242, 9037, 11038



Art. no.	1952 001 088
Drive	46 mm
Drive type	Outer hexagon
Width across flats	140 mm
Product weight (per item)	4000 g
P. Qty./unit	1

Impact socket wrench bit 1 inch WS75

Especially for the safe and damage-free disassembly and assembly of almost all popular Iveco rear axles.



Art. no.	1952 001 372
Drive	1 inch
Length	80 mm
Width across flats	75 mm
Product weight (per item)	2700 g
P. Qty./unit	1

Axle nut impact socket wrench CV 8-pt.

For disassembly and assembly of the front axle nut in front of the brake disc.



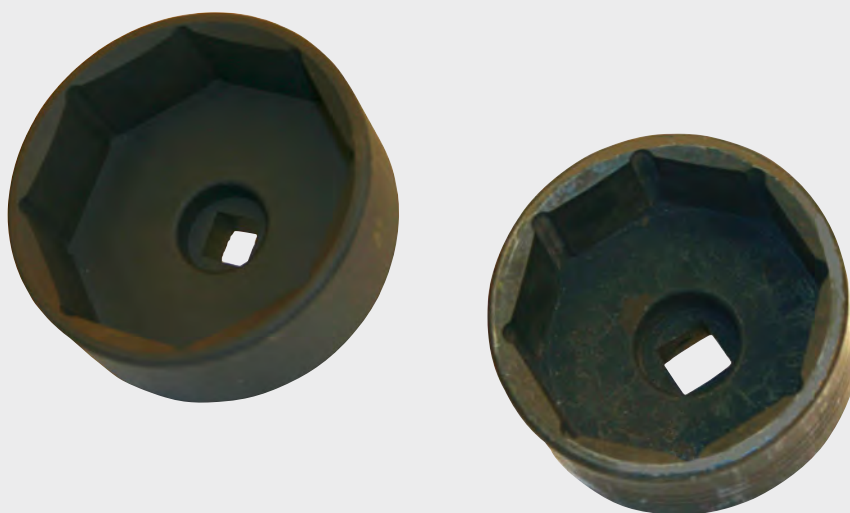
Application area

MAN, DAF 106, Scania 124 I - 144 I - etc.

Art. no.	1952 001 107
Drive	3/4 inch
Drive type	Internal square
Width across flats	80 mm
Product weight (per item)	2400 g
P. Qty./unit	1

Axle nut wrench 8-pt.

Special socket wrench insert for the union nut on the 3 Series axle.



Drive	3/4 inch
--------------	----------

Drive type	Width across flats	Suitable for vehicle manufacturer	Product weight (per item)	Art. no.	P. Qty./unit
Internal square	95 mm	Scania	2300 g	1952 001 311	1
Square-cut	115 mm	DAF, Volvo	2900 g	1952 001 308	1

Axle nut wrench

For disassembly and assembly of the dust caps and axle nuts.

Application area

- 1952001095, 1952001096, 1952001097:
Universal truck/commercial vehicle
- 1952001098: Scania axle nut 124 L/144 L FA
- 1952001099, 1952001100, 1952001101, 1952001102,
1952001103, 1952001104: Universal truck/commercial vehicle
- 1952001105: FA Volvo FH 12 and FH 16 from MY 93 onwards



Drive	3/4 inch
Drive type	Internal square
Length	205 mm

Width across flats	Product weight (per item)	Art. no.	P. Qty./unit
60 mm	1600 g	1952 001 095	1
65 mm	1800 g	1952 001 096	1
70 mm	2000 g	1952 001 097	1
80 mm	2400 g	1952 001 098	1
85 mm	2600 g	1952 001 099	1
90 mm	2800 g	1952 001 100	1
95 mm	3000 g	1952 001 101	1
100 mm	3200 g	1952 001 102	1
105 mm	3400 g	1952 001 103	1
110 mm	3600 g	1952 001 104	1
115 mm	3800 g	1952 001 105	1

Pin wrench

For disassembly and assembly of rear axle and supporting joint grooved nuts.

Application area

- 1952 001 111
MB M-Class - front and rear axle
- 1952 001 112
MB Actros, Atego (heavy-duty design), LN2, SK rear axle 740,0/9 -
744.8 - 745.7 - 747.7 - 748.2 HD 7/ 19 DG 13, HD4/16-1



Drive	3/4 inch
Drive type	Internal square

Min. diameter	Max. diameter	Min./max. diameter	Pin width	Product weight (per item)	Art. no.	P. Qty./unit
52 mm	60 mm	52-60 mm	7.5 mm	950 g	1952 001 111	1
62.8 mm	70 mm	62.8-70 mm	7.5 mm	1600 g	1952 001 112	1
92.5 mm	100.5 mm	92.5-100.5 mm	8 mm	1400 g	1952 001 113	1

Pin wrench basic body for 3/4 inch TGA

With 6 internal pins for disassembly and assembly for TGA rear axles.

Application area

- MAN TGA rear axle, e.g. HY 1130/HY 1336/HY 1350



Basic body can only be used in combination with guide tube (art. no. 1952 001 115)

Art. no.	1952 001 114
Drive	3/4 inch
Pin width	11.5 mm
Length	111 mm
Width across flats	60 mm
Product weight (per item)	5100 g
P. Qty./unit	1

Guide tube MAN-TGA

To fix the pin wrench.

Application area

- MAN-TGA rear axle, e. g. HY 1350



Guide tube can only be used in combination with basic body (art. no. 1952 001 114)

Art. no.	1952 001 115
Min. diameter	60 mm
Max. diameter	66.5 mm
Length	140 mm
Suitable for vehicle type	MAN
Product weight (per item)	900 g
P. Qty./unit	1

Rear axle extension pipe

To guide the bearing onto the rear axle during assembly.

Application area

For example: MAN TGX, TGA, TGS. Rear axle HY 1336, HY 1350 (13t), F2000, Lion's Star, Lion's Regio, Lion's Coach, Lion's Classic, ND, NUE, NM, NEOPLAN Starliner, Cityliner, Centroliner, Trendliner



Art. no.	1952 001 116
Max. diameter	105 mm
Length	360 mm
Suitable for vehicle type	MAN
Product weight (per item)	4900 g
P. Qty./unit	1

Assembly sleeve

For MB/MAN rear axle with guide tube and basic body

Application area

Rear axle HL2 in the MAN L series and MB Atego and Vario



Art. no.	1952 001 117
Max. diameter	76 mm
Length	185 mm
Female thread	75 mm
Product weight (per item)	2600 g
P. Qty./unit	1

Pin wrench, RA

Wrench equipped with 6 pins for disassembly and assembly of rear axles.



Application area

VW LT, MB Sprinter 412 D

Art. no.	1952 001 022
Drive	3/4 inch
Pin width	8 mm
Internal diameter	50 mm
Length	61 mm
Length 2	52 mm
Max. nominal diameter of external Torx	70 mm
Suitable for vehicle manufacturer	VAG, Mercedes-Benz
Product weight (per item)	850 g
P. Qty./unit	1

3/4 inch grooved nut wrench set

3 pieces. With exchangeable guide tube for disassembly and assembly work on the rear axle.



Application area

MAN TGL - L2000 for HY 0925 and similar, MB Atego rear axle HL2, 814 Vitaro. TZ 3, TZ 5 axle. Suitable for MAN grooved nut 81.90620-0116.

Contents for art. no.

1952 001 145	1 x 3/4 inch grooved nut wrench basic body; Guide tube for pin wrench: 1 x 49 mm, 1 x 57 mm
---------------------	--

Art. no.	1952 001 145
Drive	3/4 inch
Pin width	10 mm
Internal diameter	87 mm
Length	65 mm
Product weight (per item)	3100 g
P. Qty./unit	1

Pin wrench set, FA/RA, 3/4 inch

3 pieces. With exchangeable guide tube for disassembly and assembly work on the front and rear axle.



Contents for art. no.	
1952 001 141	1 x 3/4 inch grooved nut wrench basic body 6 Zapfen, Pin width 11.4 mm, Internal diameter 101.5 mm; Guide tube for pin wrench: 1 x Outer diameter 51.5 mm, Length 135 mm, 1 x Outer diameter 66.5 mm, Length 135 mm

Art. no.	1952 001 141
P. Qty./unit	1



Draining tray for truck axle oil

Special shape adapts to truck axles

- With its rounded shape, it adapts to nearly every axle
- Built-in pouring spout
- Two side handles for carrying
- Made from impact- and heat-resistant polypropylene to collect hot oil
- Capacity: 3.3 litres



Art. no.	1952 001 424
Length	316 mm
Width	246 mm
Height	156 mm
Contents	3.3 l
Material	PP - Polypropylene
Min. temperature resistance	-40 °C
Max. temperature resistance	80 °C
Min./max. temperature resistance	-40 to 80 °C
P. Qty./unit	1

Application area

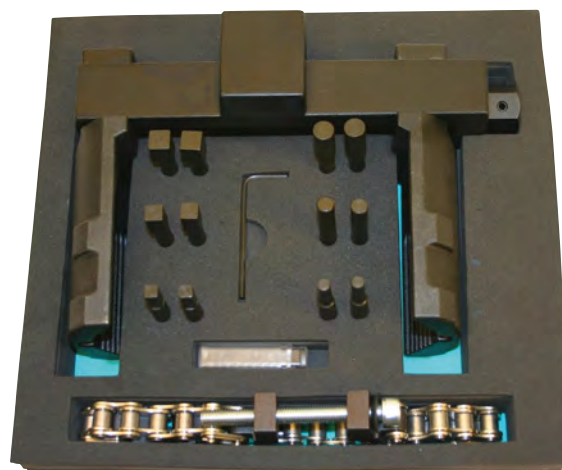
Use it to drain differential oil from trucks, construction vehicles and agricultural machines



Axle nut and grooved nut wrench set Universal - commercial vehicle

15 pieces. Heavy-duty design for disassembly and assembly of axle nuts and grease caps.

- Suitable for octagonal and hexagonal nuts, grooved nuts, face nuts, round nuts with two holes, capstan nuts
- Tightening torque up to 700 Nm possible
- Scope of delivery:
 - 1 x axle nut and grooved nut wrench
 - 2 x adapter, round, 6 mm
 - 2 x adapter, round, 8 mm
 - 2 x adapter, round, 10 mm
 - 2 x adapter, square, 6 mm
 - 2 x adapter, square, 8 mm
 - 2 x adapter, square, 10 mm
 - 1 x tensioning chain
 - 1 x T-handle wrench



Art. no.	1952 001 281
Drive	3/4 inch
Min. grip range	70 mm
Max. grip range	170 mm
Min./max. grip range	70-170 mm
Product weight (per item)	4700 g
P. Qty./unit	1

Bearing shell assembly kit

For exact and centric disassembly and assembly of bearing shells.

- Twist and damage-free mounting
- Durable forged and demountable design

Application area

Cars, vans, trucks, buses, agricultural and construction machinery, machine and plant construction

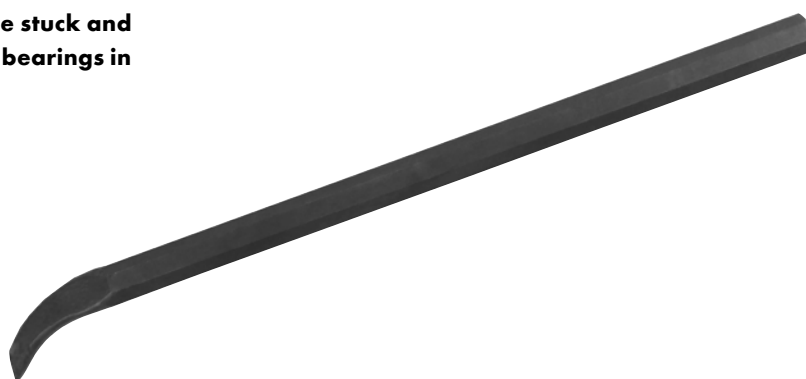


Art. no.	1952 001 280
Min. grip range	85 mm
Max. grip range	180 mm
Min./max. grip range	85-180 mm
Product weight (per item)	4400 g
P. Qty./unit	1



Bearing ring ejector Commercial vehicle

For removing bearing shells that have become stuck and for the outer rings of two-part tapered roller bearings in wheel hubs.



Art. no.	1952 001 405
Length	500 mm
Product weight (per item)	2000 g
P. Qty./unit	1

Plug-in tool for cassette ring

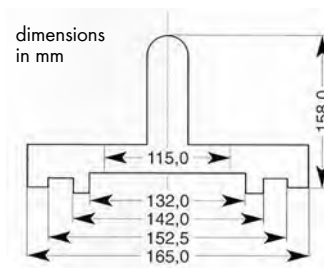
For pressing in rotary shaft seals

Application area

MB-Actros FA 739.5 - RA 749.108/30 MB FA + trailing axle ABS



Art. no.	1952 001 282
Outer diameter	165 mm
Length	158 mm
Suitable for vehicle type	Mercedes Actros (Cabin)
Product weight (per item)	2100 g
P. Qty./unit	1

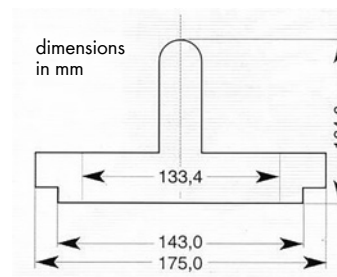


Plug-in tool for sealing ring

For pressing in rotary shaft seals

Application area

AP rear axles MB truck HL 7/1, HL 7/3, HL 7/18, HL 7/07, HL 7/015, HL 7/021, HD 7/2, HD 7/19DG, HD 7/01DG, HO 7/8 series: 1219, 1413, 1417, 1419, 1424, 1617,1619, 1621, 1624, 1926, 2219, 2226, 2626, 2632



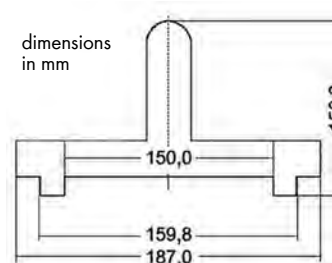
Art. no.	1952 001 283
Outer diameter	175 mm
Length	164 mm
Product weight (per item)	2400 g
P. Qty./unit	1

Plug-in tool for pulse wheel

For pressing in rotary shaft seals

Application area

MB Actros FA with ABS and disc brake, e. g. axle no. 739 520 for pulse wheel without shaft seal



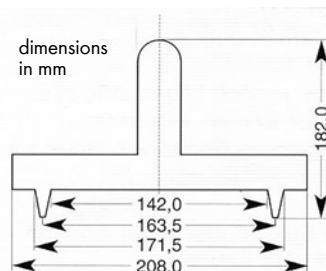
Art. no.	1952 001 285
Outer diameter	187 mm
Length	150 mm
Product weight (per item)	3100 g
P. Qty./unit	1

Plug-in tool for AP axles

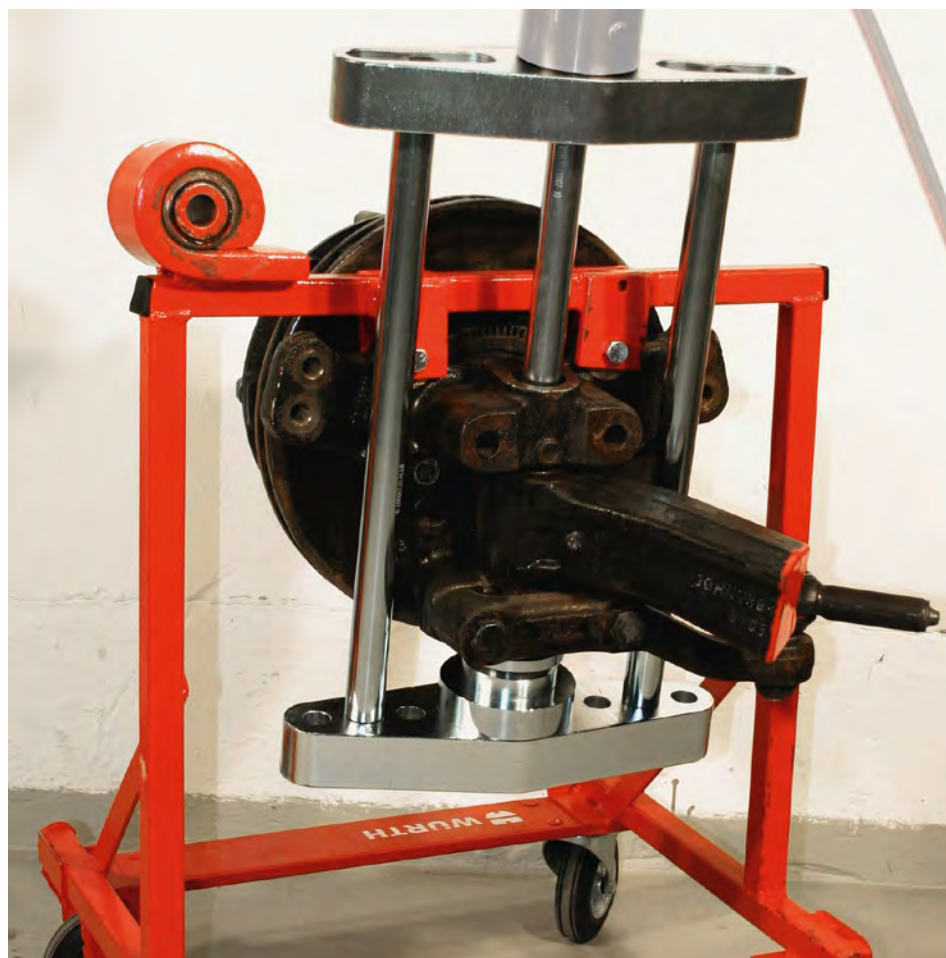
For pressing in rotary shaft seals

Application area

Including for MB, MAN, DAF



Art. no.	1952 001 284
Outer diameter	208 mm
Length	182 mm
Product weight (per item)	3000 g
P. Qty./unit	1



Universal tool kit

17 pieces. Set equipped with all pressing sleeves and pressure pieces for pressing and feeding of the steering knuckle, joint pin and silent bearings

- Scope of delivery:
 - 1x bridge with thread
 - 1x bridge without thread
 - 2x support arms, 500 mm
 - 4x Allen screws M22 x 2.5
 - 1x each of pressure pipe, diameter 80/90 x 130 mm, diameter 80/90 x 42 mm
 - 1x each of pressure sleeve, diameter 65 x 145 mm, diameter 65 x 42 mm
 - 1 adapter plate (step tread) for mounting pressing sleeves
 - 1x pressed part, diameter 65 x 65 mm
 - 1x each of pressure rod, diameter 31 x 250 mm, diameter 31 x 140 mm
 - 1 impact adapter

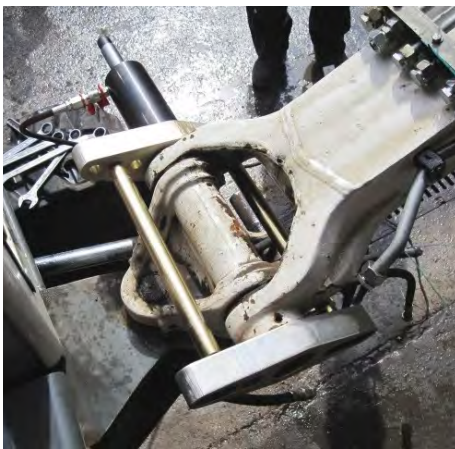
17 pcs



Art. no.	1952 001 258
Min. clamping width	130 mm
Max. clamping width	295 mm
Min./max. clamping width	130-295 mm
Max. grip range	500 mm
Product weight (per item)	35000 g
P. Qty./unit	1

Application area

Universal commercial vehicles, buses, agricultural machinery, construction machinery, plant construction, mechanical engineering

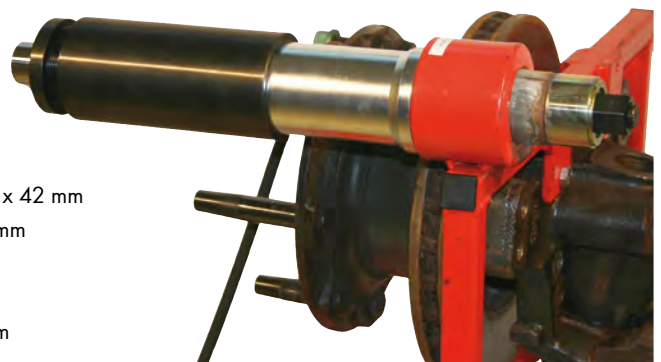


Universal tool kit in case

19 pieces. Set equipped with all pressing sleeves and pressure pieces for pressing and feeding of the steering knuckle, joint pin and silent bearings

- Scope of delivery:
 - 1x bridge with thread
 - 1x bridge without thread
 - 2x support arms, 500 mm
 - 4x Allen screws M22 x 2.5
 - 1x each of pressure pipe, diameter 80/90 x 130 mm, diameter 80/90 x 42 mm
 - 1x each of pressure sleeve, diameter 65 x 145 mm, diameter 65 x 42 mm
 - 1 adapter plate (step tread) for mounting pressing sleeves
 - 1x pressed part, diameter 65 x 65 mm
 - 1x each of pressure rod, diameter 31 x 250 mm, diameter 31 x 140 mm
 - 1 impact adapter
 - 1 case
 - 1x hard foam shaping insert, 2 pieces

19 pcs



Art. no.	1952 001 262
Max. clamping width	295 mm
Max. grip range	500 mm
Product weight (per item)	36700 g
P. Qty./unit	1



Application area

Universal commercial vehicles, buses, agricultural machinery, construction machinery, plant construction, mechanical engineering



Silent-running bearing universal set

36 pieces For removal and insertion of e. g. silent bearings, hydraulic bearings, bushings, ball bearings, rotary shaft seals.

Supplied in a case

- Easy adjustment of different diameters through various pressure sleeve diameters and stepped washers
- Individual sleeves can be reworked if necessary. The set can be operated mechanically via spindles.
- Scope of delivery:
 - 1x each of pressure sleeve internal/external 34/44, 36/46, 38/48, 40/50, 42/52, 44/54, 46/56, 48/58, 50/60, 52/62, 54/64, 56/66, 58/68, 60/70, 62/72, 64/74, 66/76, 68/78, 70/80, 72 mm/82 mm
 - 2x each of screw-down nuts with bearings M10, M12, M14, M16
 - 1x each of spindle M10, M12, M14, M16
 - 1x each of step tread size 1 for 34, 42, 50, 58, 66 mm; size 2 for 36, 44, 52, 60, 68 mm; size 3 for 38, 46, 54, 62, 70 mm; size 4 for 40, 48, 56, 64, 76 mm



Application area

Cars, trucks, buses, agricultural and construction machinery, also suitable for SUV/offroad vehicles, e. g. BMW X3, X5, X6, MB M-Class, the Porsche Cayenne, VW Touareg

Art. no.	1952 001 286
Min. diameter	34 mm
Max. diameter	72 mm
Min./max. diameter	34-72 mm
Max. loading weight	20 t
Number of pieces	36 PCS
Product weight (per item)	18000 g
P. Qty./unit	1



Mechanical actuation with spindle



Use on workshop press



Silent-running bearing universal set

46 pieces For extracting and inserting e.g. silent bearings, hydraulic bearings, bushings, ball bearings, radial shaft seals

Supplied in a high-quality case

- Easy adjustment of different diameters through various pressure sleeve diameters and stepped washers
- Individual sleeves can be reworked if necessary
- The set can be operated mechanically via spindles

- Scope of delivery:
 - 1x each of pressure sleeve internal/external 74/84, 76/86, 78/88, 80 mm/90 mm
 - 1x each of pressure sleeve internal external 82/92, 84/94, 86/96, 88/98, 90 mm/100 mm
 - 1x each of pressure sleeve internal/external 92/102, 94/104, 96/106, 98 mm/108 mm
 - 1x each of pressure sleeve internal/external 100/110, 102/112, 104 mm/114 mm
 - 1x each of pressure sleeve internal/external 106/116, 108/118, 110/120, 112 mm/122 mm
 - 2x each of pressure nut with bearing M10, M12, M14, M16
 - 1x each of lock nut for spindle M10, M12, M14
 - 1x each of spindle M10, M12, M14, M16
 - 2x trapezoidal screw-down nuts TR 20 with bearing
 - 1x each of trapezoidal spindle TR 20, short with female adapter thread M10, M12, M14; TR 20, long with female adapter thread M10, M12, M14
 - 1x each of step tread size 1 for 74, 82, 90, 96, 106 mm; size 2 for 76, 84, 92, 100, 108 mm; size 3 for 78, 86, 94, 102, 110 mm; size 4 for 80, 88, 96, 104, 112 mm
 - 2x pressure adapters for step treads
 - 1x high pressure grease in syringe

Art. no.	1952 001 260
Min. diameter	74 mm
Max. diameter	112 mm
Min./max. diameter	74-112 mm
Max. loading weight	22 t
Number of pieces	46 PCS
Product weight (per item)	31100 g
P. Qty./unit	1

Application area

Cars, commercial vehicles, buses, agricultural machinery and construction vehicles; also suitable for SUVs/off-road vehicles, e.g. BMW X3, X5, X6, Mercedes Benz M Class, Porsche Cayenne, VW Touareg

Pneumatic hydraulic pump

With 1/4 inch quick-action coupling NPT and return stop for one-person operation of hydraulic tools.

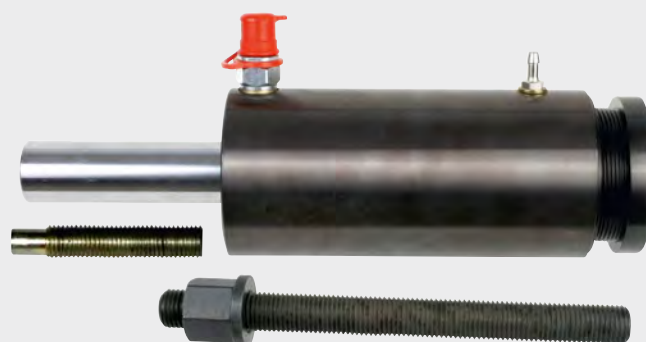


Art. no.	1952 001 255
Max. pressure	700 bar
Drive	1/4 inch
Product weight (per item)	6700 g
P. Qty./unit	1

Hydraulic cylinder set 32 T

5 pieces. Universal tool kit for pressing and fitting steering knuckle, joint pins and silent bearings with a range of movement of approx. 113 mm.

- The special design allows striking the tension or pressure rod inserted in the piston rod for increasing the release torque, e.g. for corroded or glued components
- Scope of delivery:
1 x thread protection ring, pressure spindle M 24 x 3, drawbar M 22 x 2.5, nut M 22 x 2.5, CEJN quick-action coupling



Art. no.	1952 001 257
Stroke length	113 mm
Spindle-thread diameter	24 mm
Product weight (per item)	11100 g
Max. loading weight (100)	32 t
P. Qty./unit	1

Application area

Commercial vehicles, buses, agricultural machinery, construction machinery, plant construction, mechanical engineering

Hydraulic cylinder set 22 tonnes

7 pieces. A compact hydraulic unit with low intrinsic weight (4.80 kg) for pressing and dragging with a range of movement of 70 mm.

- The special construction enables impact on the piston rods to increase breakaway torque when pressing, e.g. for corroded and bonded components.
- Puller and pressure spindle are mounted directly in the piston rod.
- The working piston retracts automatically after pressure relief thanks to the spring force.
- Scope of delivery:
 - 1 each of hammer head M22 x 2.5 mm, pressure plate M24 x 3 mm
 - 1 each of pressure piece with thread, short M24 x 3 x 92 mm, pressure piece with thread, long M24 x 3 x 132 mm
 - 1 x pressure ram with thread M24x3 mm
 - 1 x feed shaft M18/22 x 2.5 x 250 mm
 - 1 x collar nut M18 x 2.5 mm



Art. no.	1952 001 256
Stroke length	70 mm
Spindle-thread diameter	22 mm
Product weight (per item)	7200 g
Max. loading weight (100)	22 t
P. Qty./unit	1

Wheel hub puller set

8 pieces. For easy and safe removal of the hub unit on trucks equipped with non-driven front axles and trailing axles.

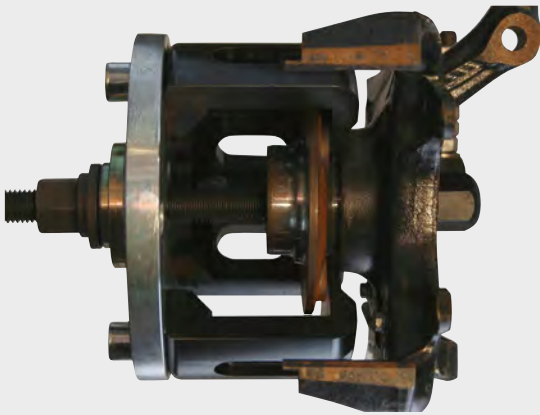
- Scope of delivery:
 - 1 x bridge with replaceable thread insert
 - 1 x trapezoidal threaded spindle TR 30 x 6
 - 2 x M20 x 1.5 drawbar with a knurled nut and U washer
 - 2 x M20 x 1.5 connection nut on M22 x 1.5
 - 2 x M22 x 1.5 thread adapter M22 on M15 x 1.5



Art. no.	1952 001 407
Width	400 mm
External clamping width	370 mm
Internal clamping width	150 mm
Max. clamping depth	400 mm
Number of pieces	8 PCS
Surface	Burnished
Product weight (per item)	18000 g
P. Qty./unit	1

Application area

For use with all common axles from SAF, BPW, MAN and Mercedes-Benz.



Application image with spindle and open bell



VW T5 | Polo 9N | Lupo

Universal compact wheel bearing mounting device

Fast, accurate and damage-free mounting of compact wheel bearings

- Can be used with spindle, common hydraulic cylinders, and under floor press.



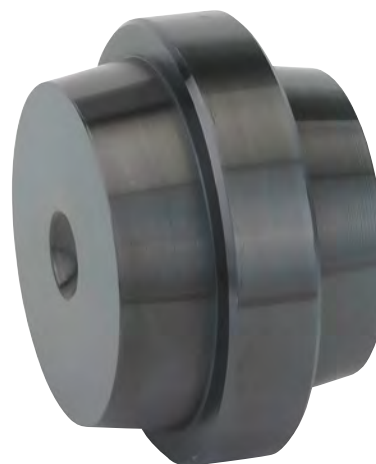
Art. no.	1952 001 302
Min. diameter	50 mm
Max. diameter	80 mm
Min./max. diameter	50-80 mm
Product weight (per item)	8000 g
P. Qty./unit	1

Application area

For universal use for car manufacturers, e. g. VW, Audi, Seat, Skoda, Ford, Mazda, Porsche, Volvo, etc. For compact wheel bearings with outer bearing ring from Ø 50 mm up to a maximum of Ø 80 mm. Also for VW T5, VW Touareg, Porsche Cayenne, VW Crafter and MB Sprinter from MY 07.

Double thrust piece for wheel hub puller

Conical design for 82 mm and 88 mm axles.



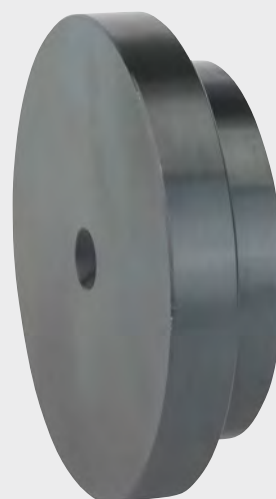
Art. no.	1952 001 408
Product weight (per item)	1000 g
P. Qty./unit	1

Application area

For use with all common axles from SAF, BPW, MAN and Mercedes-Benz.

Single thrust piece for wheel hub puller

For 82 mm and 88 mm axles.



Art. no.	1952 001 409
Min. diameter	85 mm
Max. diameter	108 mm
Product weight (per item)	1700 g
P. Qty./unit	1

Application area

For use with all common axles from SAF, BPW, MAN and Mercedes-Benz.



Thread adapter For Scania axles wheel hub puller

Consisting of two M22 x 1.5 for 7/8 inch threaded adapters for fitting the wheel hub puller.

Art. no.	1952 001 410
Connection thread	M22 x 1.5
Suitable for vehicle manufacturer	Scania
Product weight (per item)	500 g
P. Qty./unit	1

BRAKE





1/2 inch air filter cartridge wrench for commercial vehicles

For the granulate cartridges on the air dryer of truck brake systems.

Drive	1/2 inch
Drive type	Internal square

Min./max. clamping width	Product weight (per item)	Art. no.	P. Qty./unit
80-150 mm	1000 g	1952 001 074	1
110-160 mm	1350 g	1952 001 411	1



Application area

Universal commercial vehicles, agricultural machinery

3/4 inch power screwdriver insert

For disassembly and assembly of the rear brake calliper and flywheel screw connection.



Application area

VW Touareg, Mercedes-Benz Atego flywheel

Art. no.	1952 001 039
Drive	3/4 inch
Tip size	16 mm
Length	80 mm
Tip type	Multi tooth
Product weight (per item)	300 g
P. Qty./unit	1

Slugging box wrench DAF

For releasing the brake calliper when changing the brake discs.



Application area

DAF trucks XF95 and XF105

Art. no.	1952 001 195
Width across flats	26 mm
Length	160 mm
Product weight (per item)	300 g
Suitable for vehicle manufacturer	DAF
P. Qty./unit	1



3/4 inch brake calliper wrench CV

For disassembly and assembly of the fastening screw on the front brake system.

Drive	3/4 inch
Drive type	Internal square
Length	340 mm
Tip type	Twelve-sided head
Suitable for vehicle manufacturer	Mercedes-Benz

Tip size	Product weight (per item)	Art. no.	P. Qty./unit
24 mm	1300 g	1952 001 196	1
27 mm	1400 g	1952 001 197	1



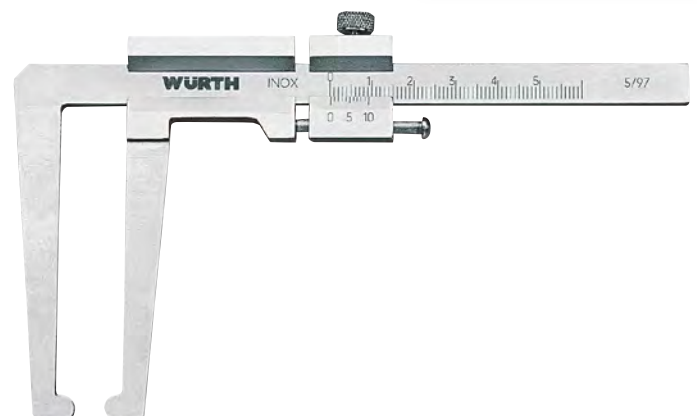
Application area
MB Atego and Actros

Brake disc vernier calliper

For measuring the thickness of fitted brake discs.

- Stainless steel, brushed chromium-plated
- Accuracy according to DIN 862
- Hardened, with locking screw

Supplied in a plastic bag



Art. no.	0715 76 16
Vernier scale	1/10 mm
Min./max. length measuring range	0-50 mm
Length of jaw	75 mm
P. Qty./unit	1

Brake calliper reset socket, steel design

For the basic setting of the automatic piston adjustment when replacing the brake pad or carrying out other repair work on the brake calliper



Drive	12 mm
Drive type	Outer hexagon
Product weight (per item)	100 g

Tip size	Tip type	Art. no.	P. Qty./unit
8 mm	For internal square	1952 001 203	1
8 mm	Hexagon socket	1952 001 204	1
10 mm	Hexagon socket	1952 001 205	1
18 mm	Multi tooth	1952 001 206	1

Application area

SAF, KNORR brake calliper on commercial vehicles

Brake spring mechanism

For the safe and damage-free disassembly and assembly of the return spring on the brake linings without disassembling the anchor plate.

- Forged claw
- Plastic handle



Art. no.	1952 001 425
Product weight (per item)	1000 g
Length	620 mm
P. Qty./unit	1

Application area

For use in all commercial vehicles, such as MAN, Mercedes-Benz, buses with AP axles, Iveco Euro Cargo, Eurotech.

Brake spring pliers

Extra heavy-duty design for disassembly of the brake drum brake spring as well as the riveted and bonded brake linings.



Art. no.	1952 001 202
Product weight (per item)	950 g
Length	500 mm
P. Qty./unit	1

Application area

Universal commercial vehicles, agricultural machinery



**Brake calliper socket wrench insert
For MAN TGA/Atego 9 t**

For disassembly and assembly of the brake calliper screws without having to remove the tie rod lever.

Art. no.	1952 001 287
Drive	30 mm
Drive type	Outer hexagon
Tip size	E20
Length	40 mm
Tip type	TX head
Product weight (per item)	180 g
Suitable for vehicle manufacturer	MAN
P. Qty./unit	1

For MAN TGA/Atego 12 t

Art. no.	1952 001 288
Drive	30 mm
Drive type	Outer hexagon
Tip size	E24
Length	40 mm
Tip type	TX head
Product weight (per item)	210 g
P. Qty./unit	1

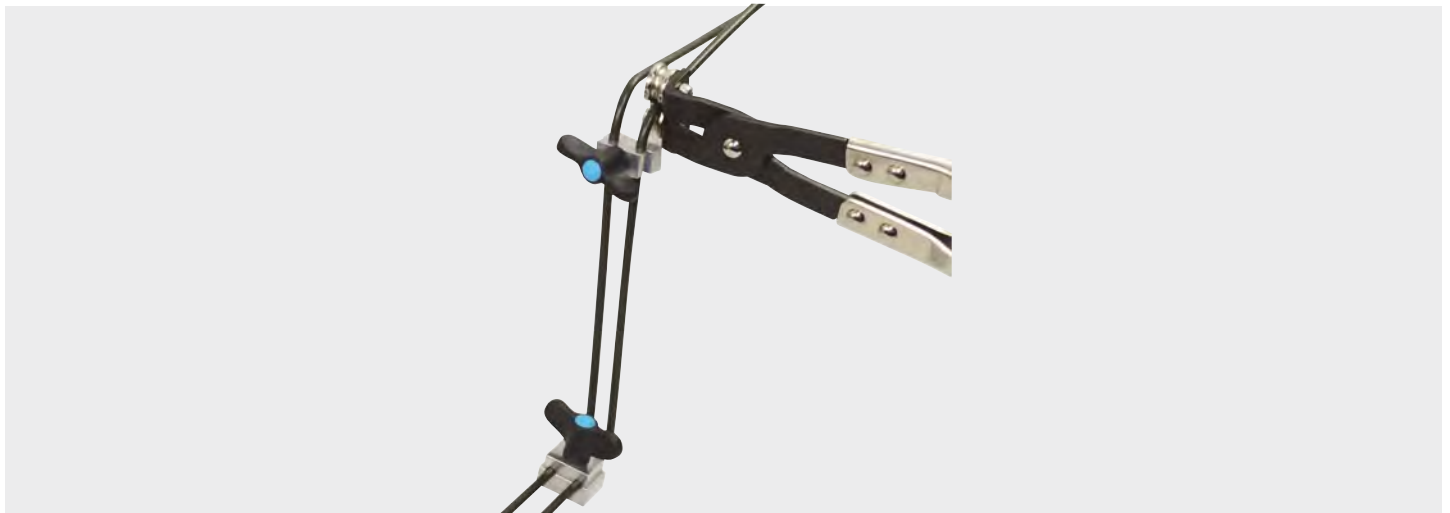
Brake piston resetting device

For proper resetting of the brake piston of vans and light commercial vehicles.

- Dimensions of the rear locking jaws: Width 100 mm, height 60 mm, thickness 7.5 mm

Art. no.	1952 001 208
Width	100 mm
Height	60 mm
Max. blade thickness	7.5 mm
Product weight (per item)	1600 g
P. Qty./unit	1





Brake line bending pliers

Patented and high-quality processed wire bending pliers for copper, aluminium, brass and soft steel pipes and plastic-coated pipes from 4.75 to 5 mm.

- Unintentional bending during the working process is avoided.
- No scraping damage to the outer insulation.
- The front-mounted rollers enable work in confined areas.



Art. no.	1952 001 396
Length	235 mm
Min. diameter	4.75 mm
Max. diameter	5 mm
Min./max. diameter	4.75-5 mm
Product weight (per item)	400 g
Material	Hardened steel
P. Qty./unit	1

Application area

When replacing the brake lines or repairing parts, it is necessary to postform the brake line.

Clamping tool kit

5 pieces. For copper, aluminium, brass and mild steel pipes and plastic coated pipes from 4.75 to 5 mm.

- The bending radii are reproduced without loss of length
- The length of old brake lines is measured using the tape measure to ensure that the new line is the correct length
- The inside diameter of the line is not changed due to clamping and bending
- Scope of delivery:
 - 2 x line clamp large
 - 2 x line clamp small
 - 1 x tape measure, 2 m

Art. no.	1952 001 397
Number of pieces in assortment/set	5 PCS
Min. diameter	5 mm
Max. diameter	4.75 mm
Min./max. diameter	5-4.75 mm
Product weight (per item)	390 g
P. Qty./unit	1





Clamping tongs

For mounting polyamide pipes



Application area

NFZ Universal commercial vehicles,
Mercedes-Benz, trailers

Min./max. grip range	Product weight (per item)	Art. no.	P. Qty./unit
6-16 mm	984.45 g	1952 001 239	1
6-16 mm	1200 g	1952 001 240	1
10-14 mm	1066 g	1952 001 290	1

Length	280 mm
---------------	--------

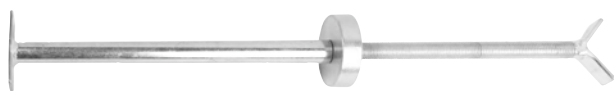


Infinitely adjustable pedal arrester

To determine brake pedals with safety or leakage tests.

Application area

Use with all common commercial vehicles



Art. no.	1952 001 395
Min. grip range	550 mm
Max. grip range	890 mm
Min./max. grip range	550-890 mm
Product weight (per item)	820 g
P. Qty./unit	1



Grease cap tongs

For easy loosening and safe extraction of grease caps

Application area

Passenger cars, transporters, trailers and agricultural machinery



Art. no.	1952 001 289
Length	280 mm
Max. grip range	75 mm
Product weight (per item)	480 g
P. Qty./unit	1

Pipe cutter shears

For plastic pipes and profiles

Art. no.	1952 001 241
Blade length	25 mm
Length	175 mm
Product weight (per item)	200.42 g
P. Qty./unit	1

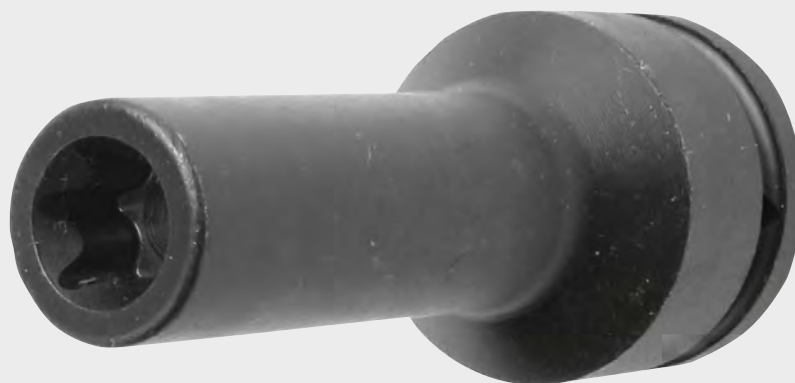


ENGINES



3/4 inch cylinder head wrench CV

In heavy-duty design without chamfer for disassembly and assembly of cheese head screws for commercial vehicles.



Drive	3/4 inch
Length	110 mm

Tip size	Tip type	Product weight (per item)	Art. no.	P. Qty./unit
17 mm	Twelve-sided head	650 g	1952 001 027	1
19 mm	Twelve-sided head	750 g	1952 001 028	1
E18	TX head	700 g	1952 001 029	1
E20	TX head	750 g	1952 001 030	1

Application area

- Mercedes-Benz, MAN
- 1952001029: MAN model M2000 and bus with engine B08
- 1952001030: MAN model F8, F90, F2000 and buses with engine D25/D28 TGA

1/2 inch cylinder head wrench CV

In heavy-duty design for disassembly and assembly of cheese head screws for commercial vehicles.



Art. no.	1952 001 031
Drive	1/2 inch
Tip size	E20
Tip type	TX head
Length	132 mm
Suitable for vehicle manufacturer	MAN
Product weight (per item)	800 g
P. Qty./unit	1

Application area

MAN mod. F2000/F90/F8 and buses with engines D25/D28 (MAN no. 80.99603.0255)



Clutch centring pin set

6 pieces. For fast and precise centring of the clutch.

- Universal use of single- and double-disc clutches

Art. no.	1952 001 291
Min. grip range	36 mm
Max. grip range	52 mm
Min./max. grip range	36-52 mm
Number of pieces	6 PCS
Product weight (per item)	3000 g
P. Qty./unit	1



Application area

Universal commercial vehicles, buses, agricultural and construction machinery

1/2 inch pin wrench set CV

4 pieces. To securely attach the pressure screw on the nozzle holder.

- Scope of delivery:
 - 1 x pin wrench 1/2 inch, nozzle holder CV 22 mm, length 70 mm
 - 1 x pin wrench CV 8.0 mm, length 140 mm
 - 1 x pin wrench CV 8.0 mm, length 125 mm
 - 1 x pin wrench CV 8.0 mm, length 70 mm



Application area

- Type: MAN, MB – commercial vehicles. OM 401-404, 407, 409 h/ha, 412-424, 441-444/A/LA, 427, 429, 447/h/ha
- MAN reference number 80.99603-0038
- MB reference number W 403 589 03 07 00

Art. no.	1952 001 036
P. Qty./unit	1

1/2 inch pin wrench nozzle holder CV

With 4 pins for safe disassembly and assembly of the pressure screw on the nozzle holder.



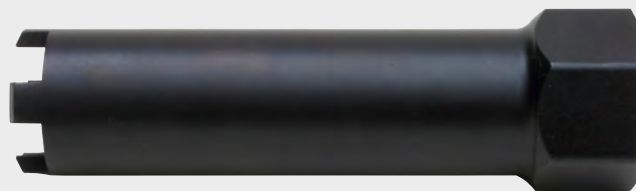
Art. no.	1952 001 032
Drive	1/2 inch
Min. diameter	22 mm
Outer diameter	29 mm
Length	70 mm
Suitable for vehicle type	MAN, Mercedes-Benz
Product weight (per item)	250 g
P. Qty./unit	1

Application area

MAN and MERCEDES-BENZ commercial vehicles M 401/421, LA, A, M 403/423, M 470h

Pin wrench CV

With 4 pins for safe disassembly and assembly of the pressure screw on the nozzle holder.



Drive	32 mm
Drive type	Outer hexagon
Pin width	8 mm
Product weight (per item)	300 g

Length	Art. no.	P. Qty./unit
70 mm	1952 001 035	1
125 mm	1952 001 034	1

Application area

- Art. no. 1952 001 034: MAN engines and Mercedes-Benz Euro II engine from the 400 series
- Art. no. 1952 001 035: MAN and Mercedes-Benz commercial vehicles: OM 401-404, 407, 409 h/ha, 421-424, 441-444/A/LA, 427, 429, 447/h/ha

1/2-inch socket wrench insert CV

For tensioning V-belts via the alternator.



Art. no.	1952 001 037
Drive	1/2 inch
Tip type	Hexagon
Length	200 mm
Drive type	Internal square
Tip size	19 mm
Product weight (per item)	900 g
P. Qty./unit	1

Application area

MAN F90, F2000 series, Mercedes-Benz up to SK series

1/4 inch TS screwdriver bit assortment

9 pieces For TS/five-star screws.

- On handy terminal block



Art. no.	1952 001 038
Drive	1/4 inch
Drive type	Internal square
Number of pieces	9 PCS
Included in delivery (Lieferumfang)	TS 10,15,20,25,27,30,40,45,50
Product weight (per item)	200 g
P. Qty./unit	1

Application area

For example, for plug-in pumps on Mercedes-Benz Atego, Actros and Rover immobiliser

3/8 inch injector cable wrench

In heavy-duty design for loosening and tightening 90° injection lines.



Drive	3/8 inch
Drive type	Internal square
Tip type	Hexagon
Length	70 mm

Tip size	Product weight (per item)	Art. no.	P. Qty./unit
10 mm	150 g	1952 001 042	1
12 mm	150 g	1952 001 043	1
14 mm	180 g	1952 001 044	1
16 mm	180 g	1952 001 045	1
17 mm	190 g	1952 001 046	1
18 mm	190 g	1952 001 047	1
19 mm	200 g	1952 001 048	1
22 mm	210 g	1952 001 049	1

1/2 inch injector cable wrench

In heavy-duty design for loosening and tightening 90° injection lines.



Drive	1/2 inch
Drive type	Internal square
Tip type	Twelve-sided head
Length	100 mm

Tip size	Product weight (per item)	Art. no.	P. Qty./unit
14 mm	210 g	1952 001 050	1
16 mm	230 g	1952 001 051	1
17 mm	240 g	1952 001 052	1
18 mm	240 g	1952 001 053	1
19 mm	240 g	1952 001 054	1
22 mm	250 g	1952 001 055	1



Engine turning unit With 3 gears and thicker intermediate plate

For the cut-out provided for manual, precise cranking of the engine.



Art. no.	1952 001 041
External drive	WS19
Drive type	Outer hexagon
Product weight (per item)	785 g
P. Qty./unit	1

Application area

Mercedes-Benz 900 series, OM 904-906, e.g. as Actros and Atego and all 5-, 6- and 8-cylinder MAN engines (not 12-cylinder), design like MB 904589046300, MAN 80-99626-6006

Engine turning unit With 2 gears

For the cut-out provided for manual, precise cranking of the engine.



Art. no.	1952 001 040
External drive	WS19
Drive type	Outer hexagon
Product weight (per item)	516 g
P. Qty./unit	1

Application area

Mercedes-Benz OM 401-404-407-409 h/hA, 421-424, 441-444/A/LA, 427, 429, 4289, 447/h/hA, as well as all 12-cylinder MAN engines

Engine turning unit Scania

For the cut-out provided for manual, precise cranking of the engine.



Art. no.	1952 001 292
Drive	1/2 inch
Drive type	Internal square
Product weight (per item)	240 g
P. Qty./unit	1

Application area

From MY 1996 – 2004 series L type 94/114/124/144 and from MY 2004 – series R

Engine turning unit Volvo

For the cut-out provided for manual, precise cranking of the engine.



Art. no.	1952 001 293
Drive	1/2 inch
Drive type	Internal square
Product weight (per item)	860 g
P. Qty./unit	1

Application area

6 and 12 litre engines, D9A, D12, D16C

Engine turning unit DAF

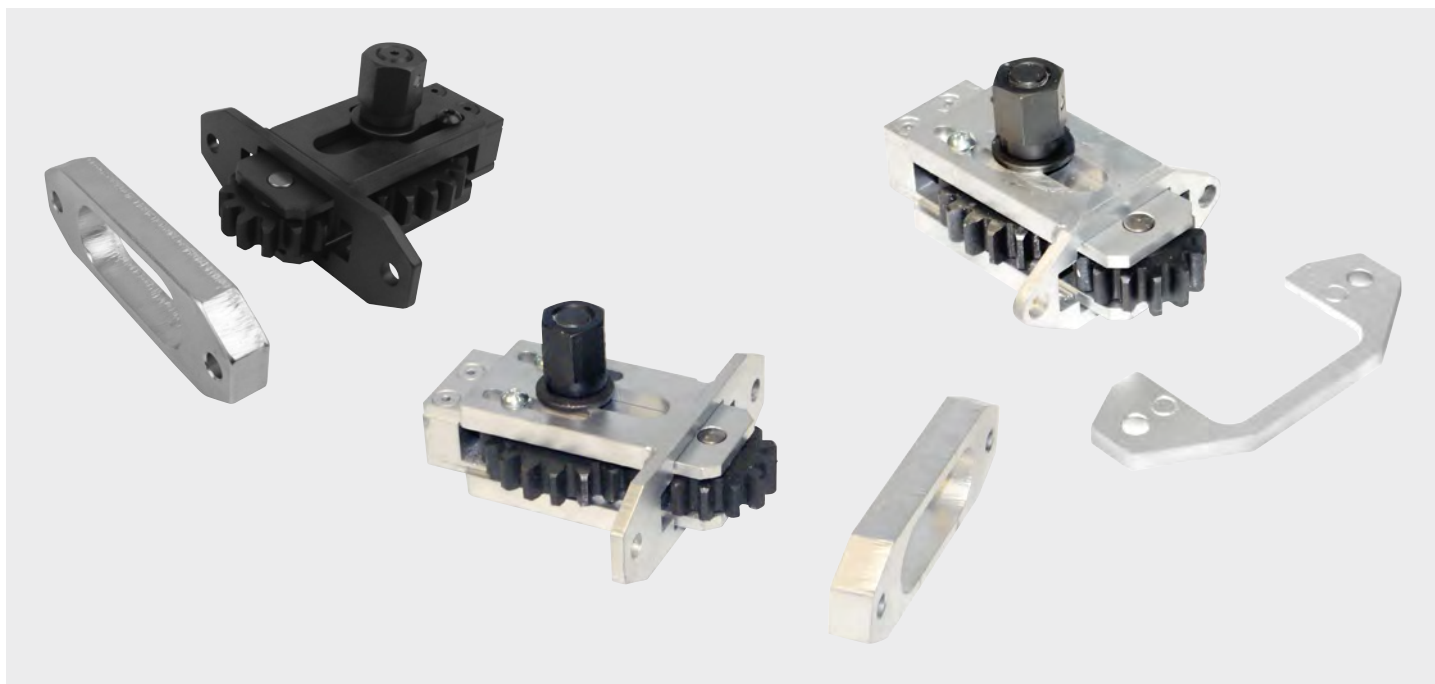
For the cut-out provided for manual, precise cranking of the engine.



Art. no.	1952 001 294
Drive	1/2 inch
Drive type	Internal square
Product weight (per item)	300 g
P. Qty./unit	1

Application area

XF 105 Euro 5



Engine turning unit for Iveco

For manually turning over switched-off engine

- For adjustments on the engine control unit and fuel pump

Drive	Drive type	Product weight (per item)	Art. no.	P. Qty./unit
19 mm	Hexagon	1362 g	1952 006 430	1
19 mm	Hexagon	1757 g	1952 006 425	1
22 mm	Outer hexagon	1455 g	1952 001 404	1

Application area

- Art. no. 1952 006 430: Cargo Eurotech - Iveco 99360322, Iveco engines 190.38, Iveco engines 8360.46/F3A/F3B Cursor 10
- Art. no. 1952 006 425: PT Eurotech/Eurostar, Euro Trakker/OE - Iveco 99360325, Iveco engines 8360.46/F3A/F3B Cursor 10, Iveco engines 8360.46/F3A/F3B Cursor 13, Iveco engines 8360.46/F3A/F3B Cursor 8PT Eurotech/Eurostar, Euro Trakker/OE - Iveco 99360321
- Art. no. 1952 001 404: Iveco engines 8040-25, Iveco engines 8210.42, Iveco engines 8260, Iveco engines 8280, Iveco engines 8460, Iveco engines 4578060-2545, Iveco engines 190.38, Iveco engines 190.42OE - Iveco 99360322Off Road - Iveco 99360322, Heavyon - Iveco 99360322, Euro Cargo - Iveco 99360322, Cargo Eurotech - Iveco 99360322Bus - Iveco 99360322

Engine turning unit DAF, hexagon

For the cut-out provided for manual, precise cranking of the engine.

Art. no.	1952 001 295
External drive	WS24
Drive type	Outer hexagon
Product weight (per item)	700 g
P. Qty./unit	1



Application area

F65, F75, F85, F95, CF 65, CF 75, CF 85, XF 95



Cooling system vacuum filling device with filling gun

The deep vacuum technology prevents air pockets when refilling the cooling system of passenger cars and trucks.

- Filling gun with vacuum gauge from 0 to -1 bar
- A 1.5 m hose as well as a truck and car cone adapter are included in the scope of delivery.
- Thanks to the unique, universal multi-purpose cone, there is no need for additional adapters.

Art. no.	1952 001 391
Min. working pressure	5.5 bar
Max. air pressure	9 bar
Max. air consumption	180 l/min
Connection thread	1/4 inch
P. Qty./unit	1





Cooling system vacuum filling device with quick-action coupling

The deep vacuum technology prevents air pockets when refilling the cooling system of passenger cars and trucks.

- Vacuum gauge
- Intake and filling hose each with 1.50 m length and a universal adapter for cooler openings of Ø 20 mm to Ø 41 mm are included.
- Filling method can be used for almost all vehicle types
- Easy to use
- Bubble-free filling
- Reliable, maintenance-free
- Regardless of the volume of the cooling system

Art. no.	1952 001 392
Connection thread	Without
P. Qty./unit	1

Hand transfer pump with base plate

Robust transfer pump made of aluminium, including a 0.5 m suction hose and a 0.5 m pressure hose.

- Double connection with 600 ml per stroke
- Suction and pressure side suitable for hoses with 10 and 15 mm inner diameter

Art. no.	1952 001 376
Air consumption	6 l/min
Product weight (per item)	3332 g
P. Qty./unit	1



Application area

Recommendation for EvoBus, Daimler Citaro etc.

Cooling system test device set for commercial vehicles

9 pieces Aluminium design for leak testing of cooling systems.

- Scope of delivery:
 - 1 x pressure pump with quick-action coupling
 - 1 x flexible connecting piece with quick-action coupling
 - 1 x DAF XF 95 - XF 105 adapter
 - 1 x Scania 113 - 114 - 124 - 125 adapter
 - 1 x Volvo FH 12 adapter
 - 1 x Iveco Daily 2000 C series adapter, Renault Magnum
 - 1x MAN L 2000 adapter - TGA
 - 1x adapter for MB Actros, Atego, Axor, -ECO 8401, -truck 1728, MAN F 2000, IVECO Euro Star, Iveco EURO-Tech, Euro truck, Strahlis
 - 1 x MB Sprinter adapter up to MY 2006, -Vito. (Adapter in metal version as bayonet lock)



Art. no.	1952 001 064
Number of pieces	9 PCS
Product weight (per item)	1700 g
P. Qty./unit	1

Application area

Scania 113/114/124/125, DAF XF 95/XF 105, Mercedes-Benz Actros/Atego/Axor, Iveco Daily 2000 C series, MAN L 200-TGA, Volvo FH 12, MB Sprinter up to MY 2006

Strap clamp tensioning device Iveco

The clamping tool enables the assembly of clamps in all areas of application across all model series.

- Suitable for slotted screwdriver

Art. no.	1952 001 394
Suitable for vehicle manufacturer	Iveco
External drive	WS6
Drive type	Outer hexagon
Product weight (per item)	240 g
P. Qty./unit	1



Application area

OEM part numbers for CSPS clamps: 18186570, 18194990 and 18195190

Pressure and vacuum pump

Robust pump made of aluminium with precision vacuum indicator, equipped with a robust rubber cap and a dual precision scale.

- One-handed operation
- Can be switched from vacuum to pressure range
- Scope of delivery:
 - 1 x 0.5 m plastic hose
 - 1 x brass cone
 - 4 x connecting piece made of plastic
 - 1 x drainage container



Art. no.	1952 001 398
Min. working pressure	0 bar
Max. air pressure	3 bar
Connection thread	Without
Underpressure	-1 bar
Max. working pressure	3 bar
Min./max. working pressure	0-3 bar
P. Qty./unit	1

Application area

- Vacuum range: Monitoring of throttle valve, exhaust gas recirculation valve, servo brake and fuel pressure regulator
- Pressure range: Check the membrane of the injection pump and pressure check of turbocharging

Transmission switch impact socket wrench insert

For electrical switches on the transmissions

Art. no.	1952 001 059
Drive	1/2 inch
Drive type	Internal square
Tip size	27 mm
Tip type	Octagonal
Length	75 mm
Product weight (per item)	480 g
P. Qty./unit	1



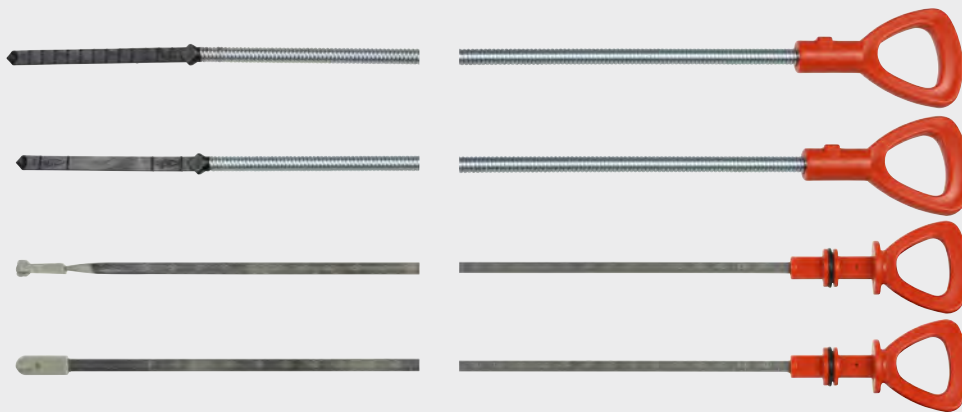
Application area

Mercedes-Benz, MAN transmission: 16S/112/130, 160/190, 710.4.5.7

Oil dipstick assortment

4 pieces. For measuring the engine and automatic transmission oil level.

- Scope of delivery:
 - 1 oil dipstick A, length 1220 mm for gearbox oil, ID 722.6
 - 1 oil dipstick B, length 920 mm for gearbox oil, ID 722.7, 716.5
 - 1 oil dipstick C, length 930 mm for engine oil, ID 103.943/984/985, 104, 111, 119, 120, 137, 603.613/963/97, 604, 605, 606, 611, 612, 613, 628, 612.965
 - 1 oil dipstick D, length 930 mm for engine oil, ID M112, 113, 646, 647, 648



Art. no.	1952 001 001
Number of pieces	4 PCS
Product weight (per item)	500 g
P. Qty./unit	1

Application area

Mercedes Benz engines code: M112, 113, 646, 647, 648, 103, 104, 943, 984, 985, 111, 119, 120, 137, 603, 913, 963, 97, 604, 605, 606, 611, 612.965 and Mercedes Benz gearbox code: 716.5, 722.6, 722.7

Socket wrench insert CV

For actuating switches in the transmission and axle area.

Application area

MAN, Mercedes-Benz Actros, SK series



Art. no.	1952 001 060
Drive	1/2 inch
Drive type	Internal square
Tip size	27 mm
Tip type	Octagonal
Product weight (per item)	260 g
P. Qty./unit	1

Transmission flange plug insert CV

For proper installation of the coupling flange.

Application area

Mercedes-Benz passenger cars, RA bearing, W140/truck gear, MB transmission G2/24/26 coupling flange



Art. no.	1952 001 061
Drive	1/2 inch
Drive type	Internal square
Tip size	36 mm
Tip type	Twelve-sided head
Length	77 mm
Product weight (per item)	375 g
P. Qty./unit	1



Seal puller tool

With 2 pull-out sizes to remove sealing rings, O-rings and rotary shaft seals of all kinds.

Art. no.	1952 001 006
Length	315 mm
Width	85 mm
Product weight (per item)	340 g
P. Qty./unit	1



Application area

Universal cars/commercial vehicles, buses, agricultural and construction machinery, machine and plant construction

Re-injection pump wrench CV

For disassembly and assembly of the injection pump.

Application area

Mercedes Benz Actros



Art. no.	1952 001 057
Drive	1/2 inch
Drive type	Internal square
Tip size	10 mm
Tip type	Twelve-sided head
Length	110 mm
Product weight (per item)	350 g
P. Qty./unit	1

Fuel filter wrench with 14 points

For disassembly and assembly of the fuel filter with the tightening torque specified by the manufacturer.

Application area

MAN-TGA, Mercedes-Benz Actros, agricultural machinery



Art. no.	1952 001 071
Drive	1/2 inch
Drive type	Internal square
Width across flats	95 mm
Product weight (per item)	950 g
P. Qty./unit	1



Ad-Blue® filter wrench

For disassembly and assembly of the cover on the urea filter element with the tightening torque specified by the manufacturer (23 Nm).

Length: 65 mm

Art. no. 1952 001 296

P. Qty./unit 1



Application area

Mercedes-Benz new Actros, Axor, Atego, Econic

Refractometer for AdBlue®

For precise and quick analysis of AdBlue® urea test (AUS32).

- With percentage scale
- Adjustable eyepiece



Art. no.	1952 001 393
Length	150 mm
Product weight (per item)	300 g
P. Qty./unit	1

Application area

For example, for MB W060598001901, MAN 08392296522, Deutz 02937499 etc.



Oil filter chain wrench, extra strong

For disassembly and assembly of commercial vehicle oil filters.

Drive	1/2 inch
Drive type	Internal square

Min./max. clamping width	Product weight (per item)	Art. no.	P. Qty./unit
55-120 mm	450 g	1952 001 002	1
60-135 mm	591.6 g	1952 001 067	1
60-220 mm	700 g	1952 001 297	1



Filter strap wrench commercial vehicles 1/2 inch

Application area

Universal (commercial vehicles), construction and agricultural machinery



Drive	1/2 inch
Drive type	Internal square
Width of band	75 mm

Min./max. clamping width	Product weight (per item)	Art. no.	P. Qty./unit
105-125 mm	820 g	1952 001 072	1
120-140 mm	900 g	1952 001 073	1

Oil filter strap wrench

For simple removal and fitting of oil filters.



Art. no.	1952 001 066
Drive	1/2 inch
Drive type	Internal square
Min./max. clamping width	105-118 mm
Width of band	37.5 mm
Product weight (per item)	650 g
P. Qty./unit	1

1/2 inch Caterpillar oil filter wrench

For disassembly and assembly of oil filters of Caterpillar machines.



Art. no.	1952 001 439
Min./max. clamping width	130-143 mm
Tip size	1/2 inch
Width of band	37.5 mm
Product weight (per item)	530 g
P. Qty./unit	1

Oil filter wrench

Precise wrench for disassembly and assembly of the plastic oil filter housing cover.



Drive	1/2 inch
Drive type	Internal square

Width across flats	Product weight (per item)	Art. no.	P. Qty./unit
94 mm	550 g	1952 001 068	1
106 mm	1100 g	1952 001 069	1
135 mm	1300 g	1952 001 070	1

Application area

- 1952001068: MAN 403, 463
- 1952001069: MAN 8-10 t types: L2000, LE, M2000, ME, also suitable for e.g. MANN filter F 1160
- 1952001070: MAN 18-48 t types: TGA, F 2000, FE, 406 - 463, 404 - 464, also suitable for e.g. MANN filter HU 1381x

Oil filter cap set

8 pieces. For loosening and tightening oil filters.

- Scope of delivery:
 - 1 x oil filter belt wrench
 - 1 x single-ended wrench
 - 1 x cup-type wrench size 36/6-point, size 74/14-point, size 106/15-point, size 107/15-point, size 108/15-point and size 108/18-point and 135 mm/18-point
 - All wrenches with external hexagon drive size 22 mm and 1/2 inch square drive



Art. no.	1952 001 003
Product weight (per item)	3500 g
P. Qty./unit	1

Oil filter cap wrench

For disassembly and assembly of the oil filter housing cover when replacing the oil filter insert.



Art. no.	1952 001 065
Drive	3/8 inch
Drive type	Internal square
Tip size	36 mm
Tip type	Hexagon
Product weight (per item)	300 g
P. Qty./unit	1

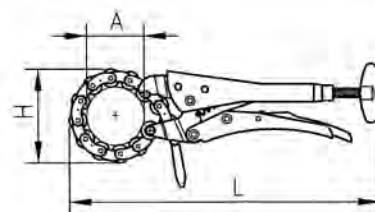
Application area

Mercedes-Benz Actros MP1, MP2, Transporter 100D engine 116 MB, E 250 D, M 605, M 606, E 300 D, E 220 D, C 220 D, C 250 D; MAN e. g. TGA (fuel filter); BMW M5 2 - 6 cylinders, 3 series + 09/95, 5 series + 96, M6 0 - 8 cylinders, M7 3-12 cylinders, 8 series, 118 D, 120 D, 1 series (E87); VW Lupo 1.2 TDI, VW Touareg TDI, VW T5 2.5 D



Chain pipe cutter

- Special steel, nickel-plated
- Secured by grip technology
Minimal force required
- Large wing screw
 - Easy adjustment during cutting
 - Quick adjustment of working range



Application area

Suitable for copper, brass and thin-walled steel pipes, plastic-coated pipes and mufflers. Stainless steel pipes up to 2.5 mm in wall thickness and 60 mm in diameter. Lengthen chain for larger cutting diameters.

Art. no.	0715 55 10
Chain length (L)	270 mm
P. Qty./unit	1

Chain

For chain pipe cutter



Art. no.	0715 55 101
P. Qty./unit	1

WHEELS



Four-way socket wrench

For loosening wheel nuts



Material	Chrome-vanadium steel
-----------------	-----------------------

Width across flats (SW)	Type of vehicle	Length	Max. torque	Art. no.	P. Qty./unit
1/2 inch (square drive) x 17 x 19 x 22 mm	Passenger car and commercial vehicle	380 mm	500 Nm	0715 16 03	1
17 x 19 x 13/16 inch x 22 mm	Passenger car	380 mm	500 Nm	0715 16 01	1
19 x 22 x 24 x 27 mm	Commercial vehicle	550 mm	1500 Nm	0715 16 02	1
24 x 27 x 30 x 32 mm	Commercial vehicle	750 mm	1800 Nm	0715 16 05	1
24 x 27 x 32 x 38 mm	Commercial vehicle	750 mm	1800 Nm	0715 16 04	1

Four-way wheel socket wrench

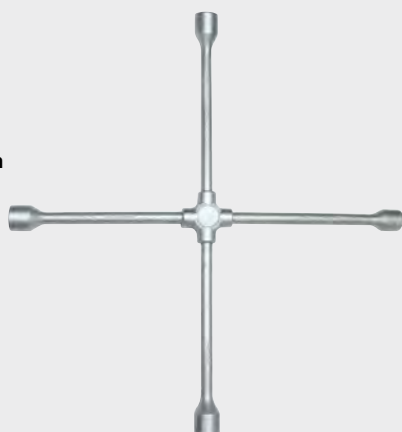
Four-way hex socket wrench in welded design, fully hardened and painted.



Art. no.	1952 001 218
Width across flats	27 x 30 x 32 x 33 mm
Length	750 mm
Material	Chrome-vanadium steel
Surface	Lacquered
Product weight (per item)	5100 g
P. Qty./unit	1

Four-way wheel socket wrench

Four-way hex socket wrench in forged design for maximum loads, fully hardened and painted.



Art. no.	1952 001 219
Width across flats	27 x 30 x 32 x 33 mm
Length	750 mm
Material	Chrome-vanadium steel
Surface	Chrome plated
Product weight (per item)	5700 g
P. Qty./unit	1

Impact socket wrench insert CV MAN/Scania

Specially designed for disassembly and assembly of MAN/Scania wheel nuts.



Art. no.	1952 001 220
Drive	3/4 inch
Drive type	Internal square
Tip size	33 mm
Tip type	Hexagon
Length	90 mm
Product weight (per item)	900 g
P. Qty./unit	1



3/4-inch wheel nut socket wrench insert

Over-length heavy-duty hex design for loosening and tightening wheel nuts on commercial vehicles without extension.

Drive	3/4 inch
Drive type	Internal square
Tip type	Hexagon

Tip size	Length	Product weight (per item)	Art. no.	P. Qty./unit
27 mm	270 mm	1100 g	1952 001 221	1
30 mm	270 mm	1200 g	1952 001 222	1
32 mm	270 mm	1300 g	1952 001 223	1
27 mm	400 mm	1400 g	1952 001 224	1
30 mm	400 mm	1500 g	1952 001 225	1
32 mm	400 mm	1600 g	1952 001 226	1
33 mm	400 mm	1600 g	1952 001 227	1



Application area

For commercial vehicles/HGVs

1 inch wheel nut socket wrench insert

For loosening and tightening all major truck wheel nuts without extension.

Art. no.	1952 001 375
Drive	1 inch
Drive type	Internal square
Tip size	33 mm
Tip type	Hexagon
Length	270 mm
Product weight (per item)	1700 g
P. Qty./unit	1



1-inch wheel nut socket wrench insert

Over-length heavy-duty hex design for loosening and tightening wheel nuts on commercial vehicles without extension.

Application area

For commercial vehicles/HGVs

Drive	1 inch
Drive type	Internal square
Tip type	Hexagon
Length	400 mm

Tip size	Product weight (per item)	Art. no.	P. Qty./unit
30 mm	2300 g	1952 001 228	1
32 mm	2400 g	1952 001 229	1
33 mm	2400 g	1952 001 230	1
34 mm	2400 g	1952 001 231	1



Centring sleeve set

3 pieces. Consisting of 115 mm-long, 1/2 inch centring sleeves for disassembly and assembly of centred commercial vehicle drop centre wheels.

- No damage to the thread
- Exact centring of the wheel rim

Application area

- Art. no. 1952 001 232: DAF, IVECO, MAN, RVI (Renault), Unimog, Volvo
- Art. no. 1952 001 234, 1952001235: Scania
- Art. no. 1952 001 236: DAF, Ford, MAN, Mercedes-Benz, Renault, Scania, Volvo
- Art. no. 1952 001 237: Scania, Volvo
- Art. no. 1952 001 238: Aluminium rims, Volvo

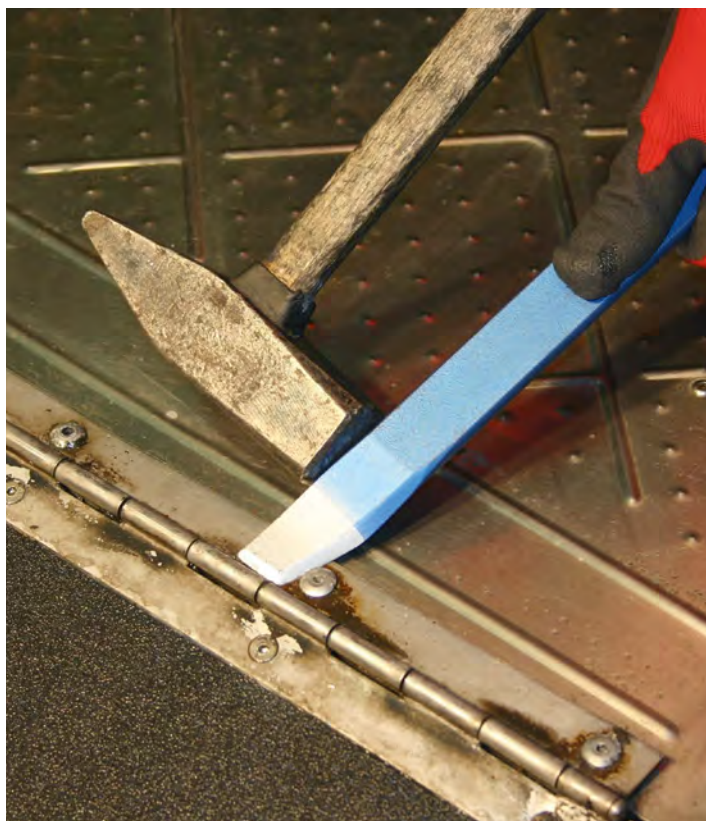
Drive	1/2 inch
Length	115 mm
Number of pieces	3 PCS
Product weight (per item)	600 g



Connection thread	Suitable for rim-hole diameter	Suitable for vehicle manufacturer	Art. no.	P. Qty./unit
FT 7/8 x 11 G	26 mm	Scania, Volvo	1952 001 237	1
FT 7/8 x 14 G	26 mm	Volvo	1952 001 238	1
M18 x 1.5	21 mm	DAF, Iveco, MAN, Renault (utility vehicles), Volvo	1952 001 232	1
M18 x 1.5	24 mm	DAF, MAN, Iveco, Renault (utility vehicles), Volvo	1952 001 233	1
M20 x 1.5	26 mm	Scania	1952 001 234	1
M22 x 1.5	26 mm	DAF, Ford, MAN, Mercedes-Benz, Renault (utility vehicles), Scania	1952 001 236	1
M22 x 2.5	26 mm	Scania	1952 001 235	1

BODYWORK





Special bodywork cutting chisel set

Extra slim, right and left – angled

- For separating bodywork parts, spot welds and sheet metal parts, especially for boot lids, doors etc.
- Concave bevel on one side

Art. no.	1952 001 004
Length	290 mm
Width	25 mm
Height	7 mm
Product weight (per item)	850 g
P. Qty./unit	1



Application area

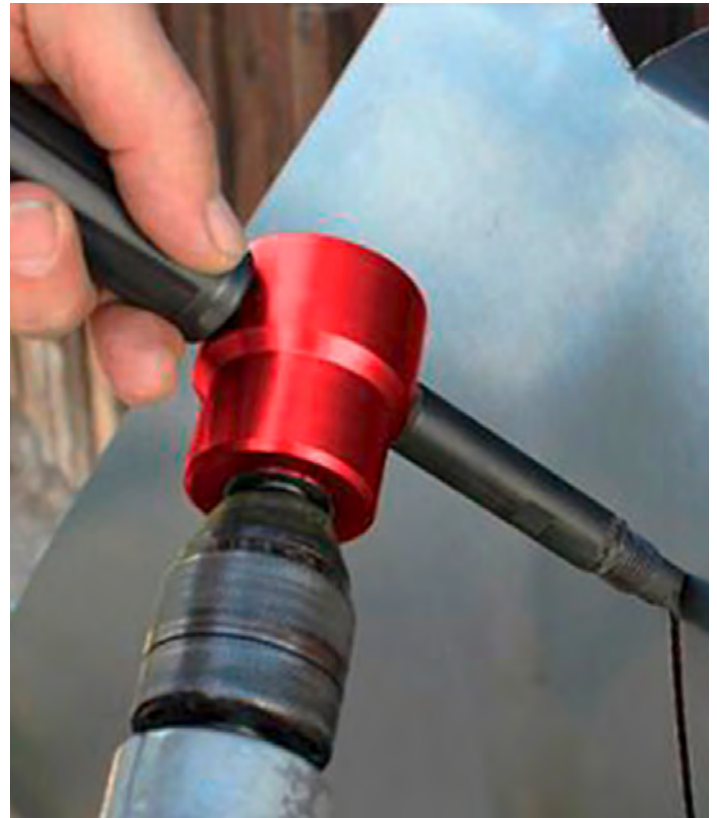
Cars, commercial vehicles, buses and agricultural machinery, mechanical engineering and plant construction

Removal and lifting wedge

The very flat tapered wedge side allows optimum removal of e.g. plastic clips from door and tailgate trims.

Art. no.	1952 001 366
Length	165 mm
Width	17 mm
Product weight (per item)	58 g
Width of mouth	5 mm
P. Qty./unit	1





Universal sheet metal cutter set

7 pieces. Universal attachment for any drill

- Effortlessly cuts sheets and other materials up to 2 mm thick
- Facilitates work without flying sparks in the smallest spaces (cold stamping)
- The cutting head can be freely adjusted in a 360° range quickly and without disassembly
- Scope of delivery:
 - 1 sheet metal cutter basic unit
 - 2 multi-holder for stationary use
 - 1 replacement head, small
 - 1 replacement head, long
 - 1 handle for sheet metal cutter
 - 1 installation key



Art. no.	1952 001 448
Number of pieces in assortment/set	7 PCS
Material to be processed	Bronze, Brass, Plastic composite material, Wood, Copper, Zinc, Structural steel, Aluminium, Zinc plated steel, Chrome, Tin, Stainless steel VA, Stainless steel V2A, Stainless steel V4A, PB, Plexiglass
Product weight (per item)	1900 g
P. Qty./unit	1

Application area

Ideal for use in model or bodywork construction, by metalworkers, GALA builders, ventilation system and plant builders, construction industry in general etc.

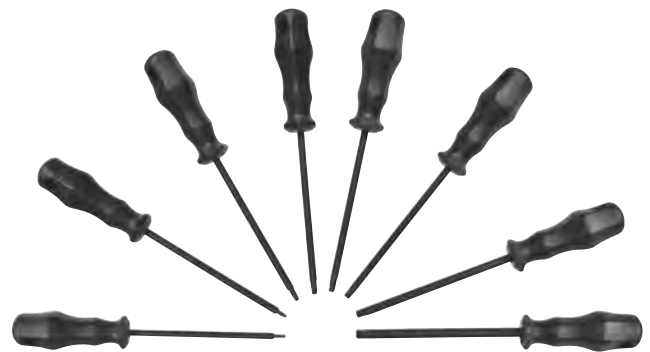
- Steel st. 37 and zinc plated steel from 0.1–2.0 mm
- Stainless steel VA, V2A, V4A from 0.1–1.2 mm
- Light metals aluminium from 0.1–2.0 mm
- Heavy metals lead, chromium, copper, zinc, tin from 0.1–2.0 mm
- Alloys such as bronze and brass from 0.1–2.0 mm
- Synthetic composites, Plexiglas wood from 0.1–2.0 mm



TS screwdriver set (5-star)

8 pieces. With safety hole for removing and installing TS five-star screws.

- Length 220 mm, with plastic Kraftform handle



Art. no.	1952 001 298
Length	220 mm
Number of pieces	8 PCS
Product weight (per item)	680 g
P. Qty./unit	1

Application area

Plug-in pumps, MB Atego tail lights, Actros, MAN, Rover immobiliser, smart interior and exterior trim, Audi, VW, Fiat air flow meter

Drift punch, US alloy steel, extra long

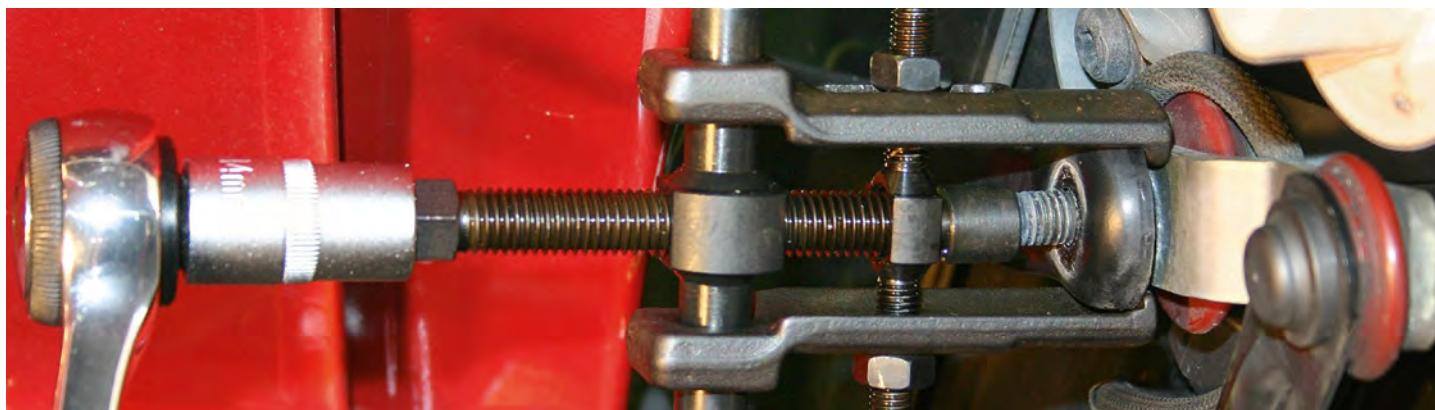
Hexagon shaft and conical tip



Length	Min. dia-meter	Max. dia-meter	Product weight (per item)	Art. no.	P. Qty./unit
280 mm	6.5 mm	16 mm	450 g	1952 001 247	1
460 mm	8 mm	19 mm	950 g	1952 001 248	1

Application area

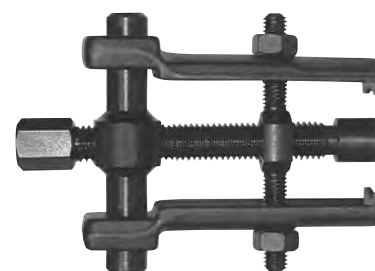
All automotive sectors, commercial vehicles, metal, building services, construction, workshops



Windscreen wiper arm puller

With special hook and hook clamp

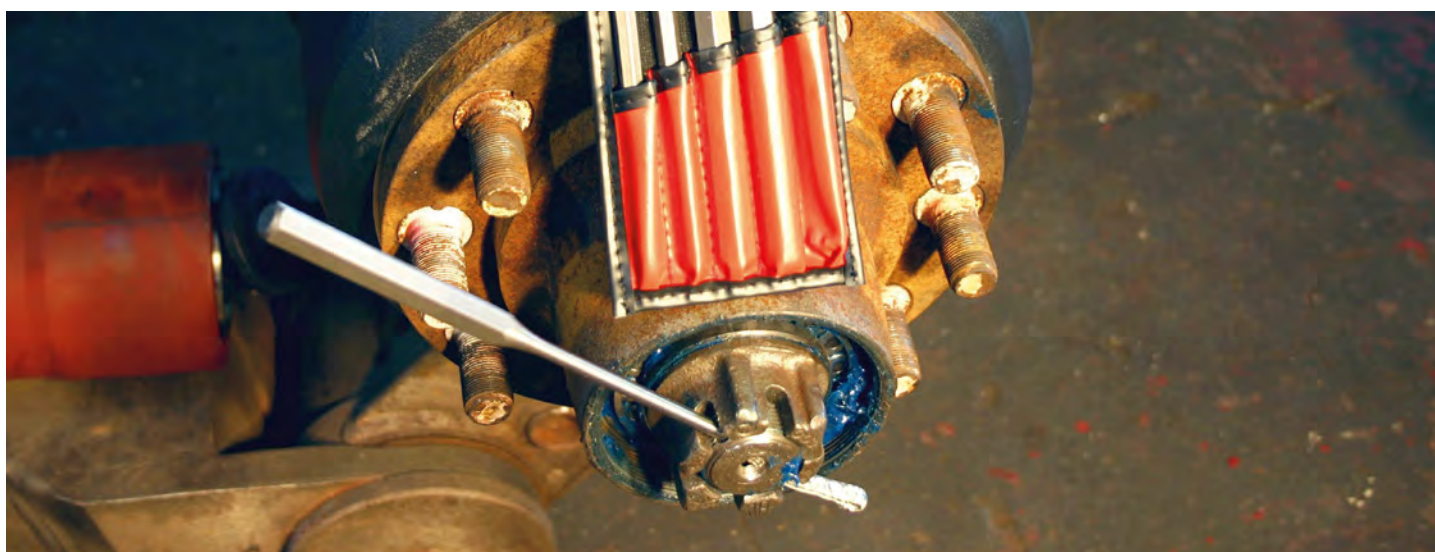
- Ideal trigger behaviour thanks to the integrated hook clamp.
This prevents the arms spreading and therefore ensures safe working.



Art. no.	1952 001 008
Clamping depth	50 mm
P. Qty./unit	1

Application area

Cars, vans, commercial vehicles, buses, construction vehicles and agricultural machinery



Pin punch set, 5 pieces, US alloy steel

With extra-long tips

- Contents:
- 1 each of 3, 4, 5, 6 and 8-mm pin punches

Art. no.	1952 001 299
Length	200 mm
Usable length	110 mm
Product weight (per item)	570.45 g
P. Qty./unit	1



Application area

All automotive sectors, commercial vehicles, metal, building services, construction, workshops



Mechanical torque wrench

Very long 3/4 inch torque wrench with changeover for clockwise/anti-clockwise tightening.

Art. no.	1952 001 305
Drive	3/4 inch
Drive type	Square-cut
Length	1010 mm
Min. torque measuring range	160 Nm
Max. torque measuring range	800 Nm
Min./max. torque measuring range	160-800 Nm
Product weight (per item)	4600 g
P. Qty./unit	1



- Simple and precise setting by turning the handle, robust steel design
- Audible and feelable perception of torque triggering prevents over-tightening of bolts

3/4-inch lever ratchet

Lever ratchet with replaceable tube for the commercial vehicle sector.

Art. no.	1952 001 370
Length of lever	1000 mm
Drive	3/4 inch
Ratchet diameter	80 mm
Surface	Chromed high-gloss satin finish
Material	Steel
Material of the grip handle	Steel
Product weight (per item)	2800 g
P. Qty./unit	1



- Equipped with 36 teeth and two-stage (double) catches.
- The two catches are firmly anchored in the ratchet head the springs are also fixed.
- The power of the ratchet gear is transferred vertically to the catches, therefore avoiding the ratchet mechanism skipping.

Application area

Suitable for use in the commercial vehicle sector as well as for construction and agricultural machinery



3/4 inch impact socket wrench MB lightweight nuts

Special socket wrench in impact-resistant design for gentle loosening and tightening of Mercedes-Benz lightweight nuts.

- Completely hollow drilled for mounting over-length bolts and driving out jammed nuts



Art. no.	1952 001 500
Drive	3/4 inch
Drive type	Square-cut
Tip size	LBM 24
Length	80 mm
Product weight (per item)	650 g
Suitable for vehicle manufacturer	Mercedes-Benz
P. Qty./unit	1

Application area

From the 07/2017 generation of new Mercedes trucks, more and more lightweight nuts are fitted in the suspension and frame area (A 005.990.78.50). Also on the fifth-wheel coupling, the front support and the vibration damper for Mercedes Benz Actros, Antos and Arocs from year of construction 2016.

1/2 inch impact socket wrench insert

Especially for metal bumper screw connections on MAN trucks.



Length: 45 mm

Art. no. 1952 001 215

P. Qty./unit 1



Hand rivet tool combination assortment



15 pieces in system case. For use with blind rivets and rivet nuts.

Art. no.	5964 949 400
Min./max. diameter of rivet-nut thread	4-10 mm
System dimensions	8.4.1
Min./max. rivet diameter	3.2-6.4 mm
Min. diameter of rivet-nut thread	4 mm
P. Qty./unit	1

Contents for art. no.	
5964 949 400	<p>1 x Hand rivet tool Combi; 1 x Nozzle mount; Threaded mandrel with chuck: 1 x 4 mm, 1 x 5 mm, 1 x 6 mm, 1 x 8 mm, 1 x 10 mm; 1 x Container; Installation key: 1 x 5 mm, 8 mm, 1 x 12 mm, 17 mm, 1 x 15 mm, 19 mm; Nozzle: 1 x 3.2 mm, 1 x 4.0 mm, 1 x 4.8 mm, 1 x 6.4 mm; 1 x System case 8.4.1</p>

UNIVERSAL



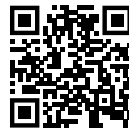
Jaw head telescopic pry bar Cars

Flexibly adjustable pry bar made of solid metal for maximum power transmission in confined spaces in the automotive sector.

- The head of the pry bar can be rotated through 180° and is securely locked using a pressure mechanism at the head.
- Lever length can be adjusted in steps of 10 mm using a push button.
- The pointed jaw enables optimal use even with low working gaps.



Length	Length 2	Product weight (per item)	Art. no.	P. Qty./unit
265 mm	400 mm	830 g	1952 001 440	1
600 mm	915 mm	1949 g	1952 001 401	1



Jaw head telescopic pry bar Commercial vehicles

Flexibly adjustable pry bar made of solid metal for maximum power transmission in confined spaces in the commercial vehicles sector.

- The head of the pry bar can be rotated through 180° and is securely locked using a pressure mechanism at the head.
- Lever length can be adjusted in 10 mm increments using a push button.
- The pointed jaw enables optimal use even with low working gaps.

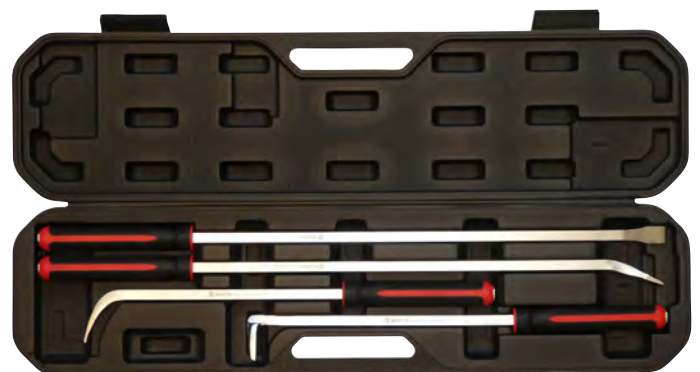


Art. no.	1952 001 402
Length	865 mm
Length 2	1350 mm
Product weight (per item)	4500 g
P. Qty./unit	1

Pry bar set

4 pcs

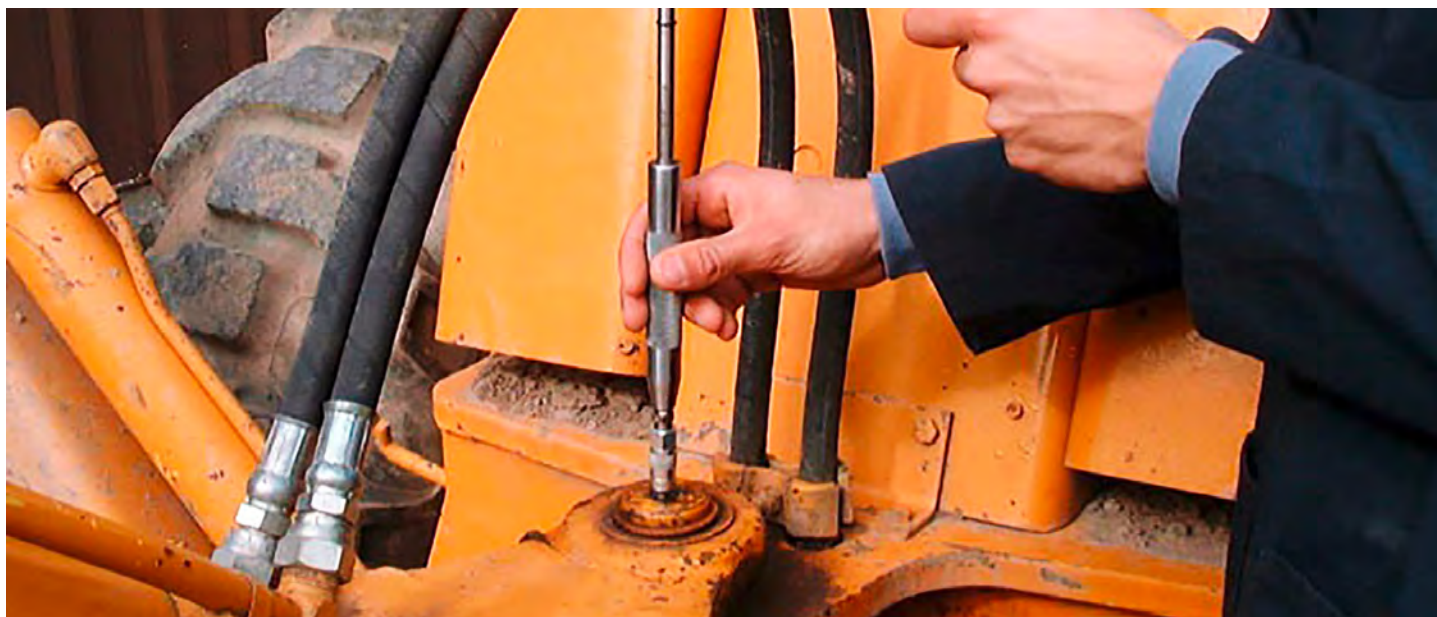
- In 4 different versions:
 - Straight shape, 930 mm long
 - Straight shape, blade angled 30° and widened, 920 mm long
 - Straight shape, blade angled 60°, 650 mm long
 - Straight shape, blade angled 90°, 640 mm long



Art. no.	1952 001 250
Number of pieces	4 PCS
Product weight (per item)	7000 g
P. Qty./unit	1

Application area

All automotive sectors, commercial vehicles, metal, building services, construction, workshops



Lubrication connection regenerator

Presses light oil into a lubrication connection and thus flushes old hardened lubricant, allowing a new lubricant to be introduced.

- Opens blocked lubrication connections straight away
- Scope of delivery:
 - 1 x flexible hose, 12 cm
 - 1 x replacement head
 - 1 x replacement O-ring mounted on die stamp



Application area

- Lubricates and eliminates blockages in bearings, wishbones, king pins, piston rods, packs, shafts, bushings etc.
- Can be used on lorries and trailers, industry, construction, mining, manufacturing, the machine shop, power trains for maritime transport etc.

Art. no.	1952 001 449
P. Qty./unit	1



HVAC ultrasonic leak detector 2n1 in plastic case

For localising leaks by means of ultrasonic waves that do not penetrate glass, rubber or metal. Mechanical noise is localised by means of a contact sensor.

- High quality and sensitivity
- Ideal for A/C leaks
- Intensity setting by means of a rotary control
- Additionally with visual LED display
- Scope of delivery:
 - 1 receiver for acoustic and optical feedback (LED display)
 - 1 ultrasonic transmitter for locating cracks in containers, defective seals, air or water entry points in the vehicle etc.
 - 2 probes (ultrasonic sensor and contact sensor)
 - 1 stereo headphones and 2 x 9-volt block batteries

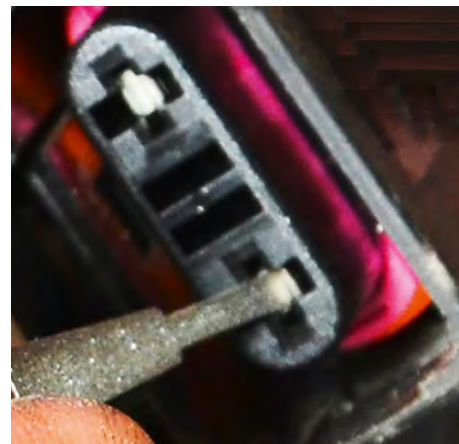


Art. no.	1952 001 399
Nominal voltage	8.4 V/DC
Cable length	80 cm
Weight	1200 g
P. Qty./unit	1

Application area

Suitable for the inspection and verification of vacuum and compressed air outlets (compressed air/pressure gas installations etc.), electrical systems (insulation failures, sparking, wiring etc.), leaking tyres, autogas systems, water ingress in the vehicle

High-quality storage case with magnetic lock



Flat plug cleaner set, diamond-coated

3 pieces. Especially for cleaning the most common male/female flat-pin connectors.

- Three tweezers in different sizes for the most common electrical connections, very durable thanks to the fine sanding diamond coating
- Versatile application on single and double plugs through rotatable arms, designed for the safe cleaning and improvement of electrical connections
- Reduces speculations with mass error diagnoses, extends the life of the entire cable harness



Art. no.	1952 001 451
P. Qty./unit	1



Universal extension

Forged version for loosening jammed screw fittings in difficult-to-access locations.

- Suitable for open-end spanner, combination spanner, offset box wrench, etc.



Max. clamping width	Length	Product weight (per item)	Art. no.	P. Qty./unit
27 mm	340 mm	721.97 g	1952 001 261	1
50 mm	580 mm	1950 g	1952 001 300	1

Application area

All automotive sectors, commercial vehicles, metal, building services, construction, workshops



Flexible extension 1/2 inch

For extremely difficult-to-access fittings requiring high torques.

- The drive with hinged element enables ,around the corner working'

Art. no.	1952 001 276
Drive	1/2 inch
Drive type	Internal square
Tip size	1/2 inch
Tip type	Square-cut
Length	225 mm
Max. torque	351 Nm
Product weight (per item)	627.8 g
P. Qty./unit	1



Flexible extension 3/8 inch

For extremely difficult-to-access fittings requiring high torques.

- The drive with hinged element enables ,around the corner working'

Art. no.	1952 001 275
Drive	3/8 inch
Drive type	Internal square
Tip size	3/8 inch
Tip type	Square-cut
Length	235 mm
Max. torque	178 Nm
Product weight (per item)	377.8 g
P. Qty./unit	1





Barrel wrench, standard

320 mm

- For all common barrel screw connections



Art. no.	1952 001 263
Tip type	Square-cut
Length	320 mm
Product weight (per item)	1300.25 g
P. Qty./unit	1

Application area

All automotive sectors, commercial vehicles, metal, building services, construction, workshops, fittings, wood



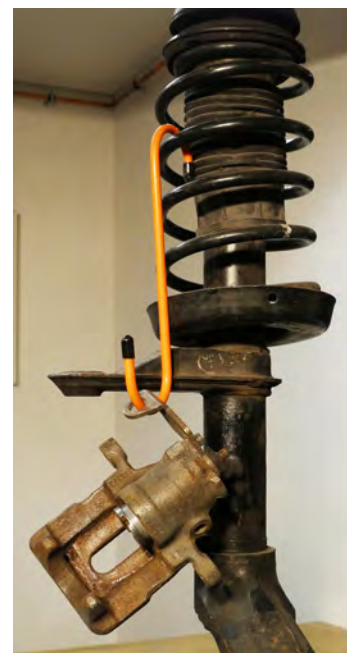
Adapter set 6 in 2 professional

2 pieces. This sets allows you to e.g. secure sockets easily to tools.

- A movable square socket pin fits adapters according to your needs and thus replaces standard adapters. You can use these to both reduce as well as enlarge.



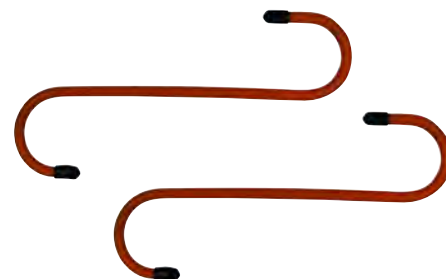
Art. no.	1952 001 365
Number of pieces	2 PCS
Product weight (per item)	230 g
P. Qty./unit	1



Universal hook S shape

2-piece. Universal help for hanging and unhooking of e.g. brake calipers, cables, compressed air lines.

- Robust and long-lasting hooks made of metal with plastic coating
- Rubber caps on the ends protect against injuries or damage to surfaces.



Art. no.	1952 001 509
P. Qty./unit	1

Application area

Particularly suitable for all work in the service and storage area, e.g. automotive, construction, metal, building services, etc.

Recoil-free soft-face hammer 2.1 kg

Especially for loosening rusted rims when changing tyres as well as for all straightening operations.

- Thanks to the steel balls in the hammer head, the hammer does not spring back, resulting in an extremely high impact action.
- In addition, the nylon handle minimizes the vibrations.

Application area

Suitable for the automotive, transporter and commercial vehicle sector



Art. no.	1952 001 390
Material of the handle	Nylon
Length	480 mm
P. Qty./unit	1

Recoil-free soft-face hammer 5 kg

Especially for loosening rusted rims when changing tyres as well as for all straightening operations.

- Thanks to the steel balls in the hammer head, the hammer does not spring back, resulting in an extremely high impact action.
- In addition, the nylon handle minimizes the vibrations.

Application area

Suitable for the automotive, transporter and commercial vehicle sector



Art. no.	1952 001 384
Length	780 mm
P. Qty./unit	1



Universal circlip clamping tool set
For circlips

26 pieces. Robust tool for quick and safe disassembly and assembly of circlips.

- Circlips are opened and closed using the knurled hand wheel or alternatively the 3/8 inch drive
- Quick and safe replacement of the replaceable tips on the mount on the forged jaws
- Includes 12 pairs of interchangeable tips

- Scope of delivery:
 - 1 x clamping tool
 - 1 pair of straight replaceable tips 2.5 - 3.0 - 3.5 - 3.8 mm
 - 1 pair of 45°-angled replaceable tips 2.5 - 3.0 - 3.5 - 3.8 mm
 - 1 pair of 90°-angled replaceable tips 2.5 - 3.0 - 3.5 - 3.8 mm
 - 1 x Allen key for replacing tips



Art. no.	1952 001 454
P. Qty./unit	1

Application area

Heavy universal design, e.g. for wheel bearings, safety circlips, drive shafts etc.



Lock ring pliers, Maxi

For internal and external rings.

- Especially solid, made of US spring steel
- With locking mechanism and replaceable, hardened, ground and polished tips for higher load capacity
- Included in the scope of delivery: straight tips



Min./max. grip range	Product weight (per item)	Tenon diameter	Suitable for	Art. no.	P. Qty./unit
125-300 mm	2200 g	3.5 mm	Indoors	1952 001 251	1
125-300 mm	2200 g	3.5 mm	Outdoors	1952 001 252	1
252-400 mm	2200 g	4.4 mm	Outdoors	1952 001 254	1
252-400 mm	2300 g	4.4 mm	Indoors	1952 001 253	1

Application area

All automotive sectors, commercial vehicles, metal, building services, construction, workshops

Length	600 mm
---------------	--------



Square pin lock key

With an oval key handle for opening bus storage covers and doors.

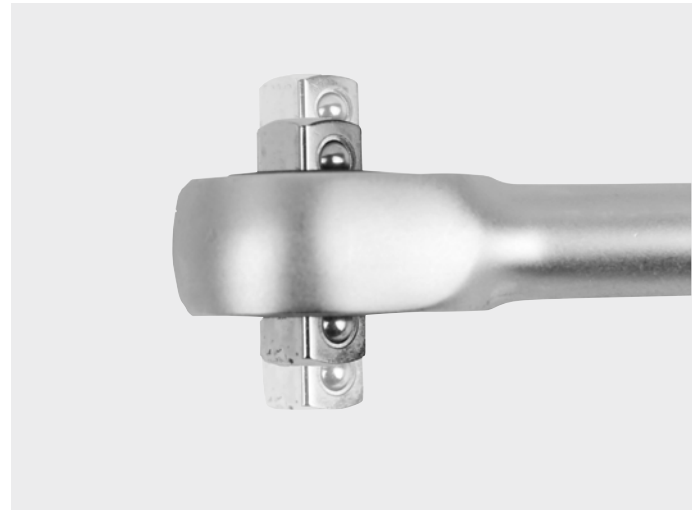
Tip size	Product weight (per item)	Art. no.	P. Qty./unit
8 mm	28 g	1952 001 301	1
9 mm	100 g	1952 001 264	1



Application area

Mercedes-Benz and MAN buses

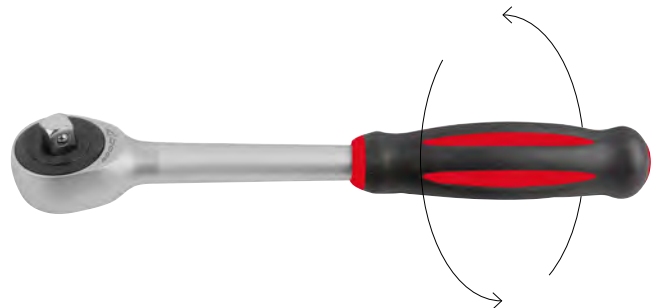
Tip type	Square-cut
Length	60 mm



Turning ratchet, 1/4 inch

For quick and efficient work

- By turning the handle, the drive square is rotated, making it easier to work in confined spaces
- No grasping at handle necessary due to double gear unit
- Suitable for left- and right-handed operation due to pass-through and permanently pinned square drive
- Conventional ratcheting is easy
- Rotation direction labelled on both sides
- Fine-toothed 60 teeth, only 6° swivel angle
- High-polish chrome plating with ergonomic handle



Art. no.	P. Qty./unit
1952 001 450	1



Innendreikant-Schlüssel

For the disassembly of the upper part of the housing for tanker sockets.



Art. no.	1952 001 265
Tip type	Triangle
Tip size	7 mm
Length	60 mm
Product weight (per item)	100 g
P. Qty./unit	1

Triangular socket wrench

For the disassembly of the upper part of the housing of tanker sockets.



Art. no.	1952 001 403
Width across flats	8 mm
Length	48 mm
Length 2	81 mm
Blade length	33 mm
Product weight (per item)	40.5 g
P. Qty./unit	1

Universal impact ball joint set

11 pieces. Universal, variable, powerful and patented impact ball joint set with 1/2-inch square drive.

- Patented joint has a quick and fixed lock for working safely
- Made from high-quality chromium molybdenum
- Scope of delivery:
 - 1 each of interchangeable socket wrench insert, long AF 13, 14, 15, 16, 17, 18, 19, 21, 22
 - 1 x articulated joint adapter with 1/2- inch output
 - 1 x 1/2-inch adapter for use with all common socket wrenches and screwdriver bits



Art. no.	1952 001 445
Number of pieces in assortment/set	11 PCS
Drive	1/2 inch
Drive type	Square-cut
Angle	25 Degree
Max. torque	600 Nm
Product weight (per item)	2150 g
P. Qty./unit	1



Impact socket wrench bit set CV

10 pieces, 3/4 inch drive

- Scope of delivery:
 - 1 socket wrench each hexagon SW14, 17, 19, 22, 24
 - 1 socket wrench each TX 70, 80, 90, 100
 - 1 1/4 inch bit holder

Application area

Universal



Art. no.	1952 001 058
Number of pieces	10 PCS
Drive	3/4 inch
Drive type	Internal square
Product weight (per item)	2500 g
P. Qty./unit	1

Impact socket wrench bit set 3/4-inch and 1-inch drive

16 pieces. Comprises 13 bits with 22-mm hexagon drive for universal use.

- Bits made of bronzed chromium-molybdenum steel
- Scope of delivery:
 - 1 each of TX profiles TX60/TX70/TX80/TX90/TX100
 - 1 each of hexagon socket 17/19/22/24 mm
 - 1 each of E-profiles E18/E20/E22/E24
 - 1 each of bit holders with 3/4 and 1 inch drive
 - 1 x Allen key



Art. no.	1952 001 015
Number of pieces	16 PCS
Drive	3/4 inch, 1 inch
Drive type	Internal square
Product weight (per item)	6400 g
P. Qty./unit	1



1/2 inch universal impact socket wrench set

4 pieces. For loosening and tightening defective and/or round turned, profiled wheel nuts or other low-lying screw joints with innovative SuperGrip profile.

- Non-slip gripping of defective and rounded screw connections is made possible by surface contact, in contrast to the standard point contacts normally available on the market
- Loosening and tightening; the screws remain reusable
- High-quality material (CrMo)
- For impact screwdrivers with 1/2 inch drive
- With rotating plastic sheath to protect sensitive surfaces
- Suitable for hexagonal, octagonal, bi-hexagonal, external TX, XZN profile, for star profiles – such as MB, Kia and Hyundai – and other special profiles
- Scope of delivery:
 - 1 each x socket WAF 17, 19, 21, 22 mm



Number of pieces	4 PCS
Drive	1/2 inch
Length	80 mm
Product weight (per item)	600 g

Art. no.	P. Qty./unit
1952 001 452	1

1/2 inch universal impact socket wrench set

22 pieces. For loosening and tightening defective and/or rounded unprofiled screw connections with the innovative new SuperGrip profile.

- Non-slip gripping of defective and rounded screw connections is made possible due to contact with the surface
- Loosening and tightening; the screws remain reusable
- For impact screwdrivers with 1/2 inch drive, additional size 22 mm, hex drive for tight installation conditions, with through-bore, therefore also suitable for stud bolts including shock absorber screw connections
- Scope of delivery:
 - 1 each x power socket wrench insert WAF 8, 10, 11, 12, 13, 14, 15, 16, 17, 19, 21, 22, 24 mm
 - 1 each x power extension 75, 125, 250 mm
 - 1 x 3/8 to 1/2 inch through-hole adapter
 - 1 x drift punch
 - 2 x circlip o-ring
 - 2 x locking pin



Art. no.	1952 001 453
Number of pieces	22 PCS
Drive	1/2 inch
Product weight (per item)	2500 g
P. Qty./unit	1

Universal impact socket wrench, 1/2 inch

For loosening and tightening defective and/or round turned non-profile screw connections with innovative new gripping edge profile.

- Non-slip gripping of defective and rounded screw connections is made possible by surface contact, in contrast to the standard point contacts normally available on the market
- Screws and nuts remain reusable, can also be used for intact screw connections
- Especially durable thanks to high-quality material (CrMo), for impact wrench with 1/2 inch drive



Art. no.	1952 001 460
Number of pieces	11 PCS
Product weight (per item)	900 g
P. Qty./unit	1



Special wrench set for installation in tight locations

23 pieces. With specially developed, extremely short sockets.

- For work on extremely tight installation locations
- With through-bore
- Finely toothed, 72 teeth
- Scope of delivery:
 - 1 x double-jointed box-end ratchet wrench, WAF 14 x 17 mm
 - 1 each x socket wrench insert, bi-hexagonal, extra short with 13 mm overhang on box wrench WAF 10, 11, 12, 13, 14 mm
 - 1 each x socket wrench insert, bi-hexagonal, extra short with 16 mm overhang on box wrench WAF 15, 16, 17, 18, 19 mm
 - 1 each x socket wrench insert, E-profile, with 13 mm overhang on box wrench E8, 10, 12, 14
 - 1 each x socket wrench insert, E-profile, with 16 mm overhang on box wrench E16, 18, 20, 22, 24
 - 3 each x spare o-rings 10, 13 mm

Number of pieces in assortment/set	23 PCS
Length	370 mm
Product weight (per item)	1650 g

Art. no.	P. Qty./unit
1952 001 444	1

Super Grip, hexagon socket bit set

11 pieces For loosening and removing round turned, non-profile hexagon socket screw connections with innovative new Super Grip profile.

- Non-slip grip of defective and round turned screw connections enabled by a new, specially developed wrench profile
- For all hexagon socket screw connections
- These special bits grip tightly to what remains of the profile and almost always enable total removal
- Especially durable thanks to high-quality material
- Use in cordless drill or ratchet tool with mount adapter
- Contents:
 - 1 x bit each in size 1.5, 2, 2.5, 3, 4, 5, 6 mm x 50 mm with 6 mm shank
 - 1 x bit each in size 7, 8 and 10 mm x 40 mm - 10 mm shank
 - 1 x 1/2 inch bit holder, 10 mm mount

Art. no.	1952 001 480
P. Qty./unit	1

Supplied in a sturdy black ABS plastic case



Application area

Particularly suitable for ball screw connections on stabiliser bars, connection pieces between hose screw connections, screw connections on tight air and oil lines, compressed air storage facilities etc.



In plastic box with hard foam insert and size marking



Set of male TX bits SUPER GRIP

Can be used to loosen screws with stripped TX socket drives.



Art. no.	1952 001 320
Number of pieces in assortment/set	11 PCS
P. Qty./unit	1



Super Grip Allen key set

9 pieces For loosening defective and/or round turned, non-profile screw connections with innovative new Super Grip profile.

- For all hexagonal screw connections
 - Can also be used for intact screw connections
 - Non-slip grip of defective and round turned screw connections enabled by a new, specially developed wrench profile
 - With ball head on the long wrench side
 - Especially durable thanks to high-quality material
 - Long design, in flap holder with size marking
- Contents:
- 1 each x T-handle wrench in size 1.5; 2; 2.5; 3; 4; 5; 6; 8 and 10 mm

Art. no.	1952 001 470
P. Qty./unit	1



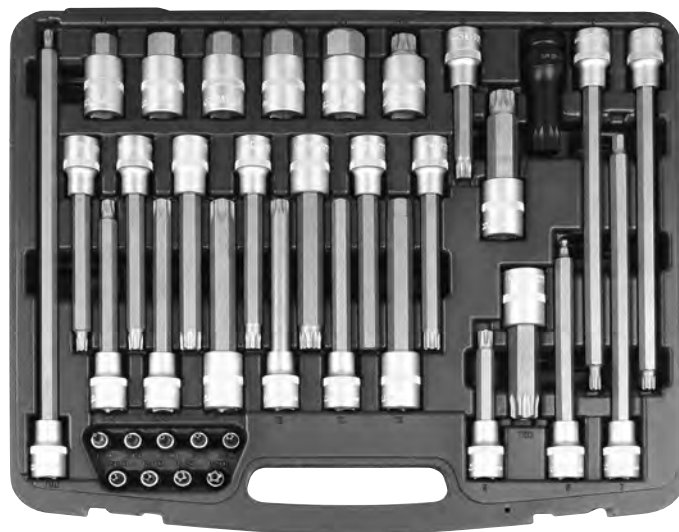
In flap holder with size marking



Special screwdriver bit assortment CV 1/4 inch and 1/2 inch drive

38 pieces For all common vehicle applications.

- Scope of delivery:
 - 1/4 inch inserts, 38 mm length:
 - 1 each of TS profiles (5-stars) TS 10, 15, 20, 25, 27, 30, 40, 45, 50
 - 1/2 inch inserts:
 - 1 each of Ribe profiles R7 x 240 mm, R8 x 240 mm, R9 x 100 mm, R10 x 140 mm
 - 1 each of T-profiles T40 x 140 mm, T45 x 140 mm, T50 x 140 mm, T55 x 140 mm, T60 x 140 mm, T70 x 140 mm
 - 1 each of XZN profiles M9 x 100 mm, M10 x 140 mm, M12 x 140 mm, M14 x 140 mm
 - 1 each of hexagon socket size 7 x 230 mm, size 10 x 140 mm, size 11 x 140 mm, size 13 x 140 mm, size 14 x 55 mm, size 17 x 55 mm, size 19 x 55 mm, size 22 x 55 mm, size 24 x 55 mm
 - 1/2 inch special inserts
 - 1 XZN profile M16 x 55 mm with hole
 - 1 XZN profile M16 x 100 mm
 - 1 impact XZN profile M18 x 78 mm
 - 1 each of T-profile T80 x 100 mm, T30 x 300 mm, each with hole
 - 1 hexagon socket size 5 x 160 mm with ball head



Art. no.	1952 001 026
Drive	1/2 inch, 1/4 inch
Drive type	Internal square
Number of pieces	38 PCS
Product weight (per item)	6500 g
P. Qty./unit	1

Special screwdriver set for cylinder-head screws, flywheel bolting, gearbox oil pumps, safety belts, shock absorbers, suspension arm retaining screws, brake callipers, wheel hubs and much more ...

1/2-inch impact socket wrench assortment

8 pieces. For TX socket screws, long.

- Fits all conventional compressed air and electric drivers



Contents for art. no.	
0715 900 100	1/2-inch impact socket wrench insert: 1 x TX30, 1 x TX40, 1 x TX45, 1 x TX50, 1 x TX55, 1 x TX60, 1 x TX70, 1 x TX80

Art. no.	0715 900 100
Number of pieces in assortment/set	8 PCS
P. Qty./unit	1

1/2-inch impact socket wrench assortment

8 pieces. For hexagon socket screws, metric, long.

- Fits all conventional compressed air and electric drivers



Contents for art. no.	
0715 900 200	1/2-inch impact socket wrench insert: 1 x 5 mm, 1 x 6 mm, 1 x 8 mm, 1 x 10 mm, 1 x 12 mm, 1 x 14 mm, 1 x 17 mm, 1 x 19 mm

Art. no.	0715 900 200
Number of pieces in assortment/set	8 PCS
P. Qty./unit	1

Impact screwdriver bit set CV

6 pcs, 1/2-inch drive

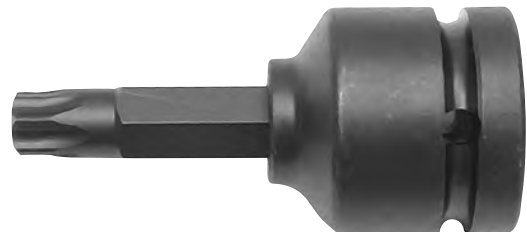
- XZN profile M14/M16/M18
- Bronzed
- Each in length 43 and 75 mm on plug-in strip



Art. no.	1952 001 016
Number of pieces	6 PCS
Drive	1/2 inch
Length	43 mm
Length 2	75 mm
Product weight (per item)	400 g
P. Qty./unit	1

Power screwdriver bit

1/2 inch drive made of solid material, manufactured for special requirements, TX.



Tip size	TX30
Drive	1/2 inch

Length	Product weight (per item)	Art. no.	P. Qty./unit
55 mm	100 g	1952 001 181	1
100 mm	150 g	1952 001 182	1

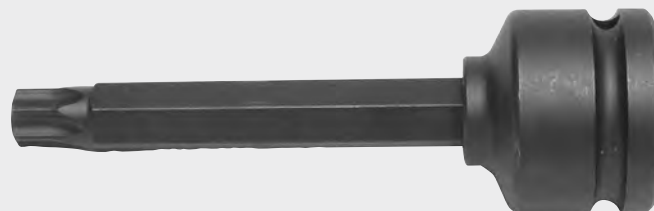
Application area

Universal and especially for Mercedes-Benz commercial vehicles and MAN

Power screwdriver bit

3/4 inch drive, bronzed, extra long

- Designed for high demands, for work on axles and brakes and deep-set screw connections



Length	130 mm
Drive	3/4 inch
Surface	Burnished

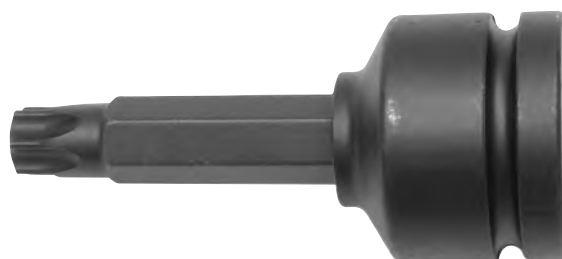
Tip size	Product weight (per item)	Art. no.	P. Qty./unit
TX60	500 g	1952 001 178	1
TX70	350 g	1952 001 179	1

Application area

Universal and especially for Mercedes-Benz Actros, brake discs, brake callipers, pitman arms

Power screwdriver bit

3/4 inch drive, TX



Drive	3/4 inch
--------------	----------

Tip size	Length	Product weight (per item)	Art. no.	P. Qty./unit
TX60	80 mm	250 g	1952 001 190	1
TX60	100 mm	450 g	1952 001 183	1
TX70	80 mm	280 g	1952 001 191	1
TX80	80 mm	300 g	1952 001 192	1
TX90	80 mm	320 g	1952 001 193	1
TX100	80 mm	350 g	1952 001 194	1

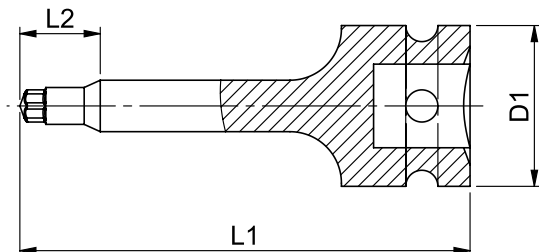
Application area

Universal and especially for MAN and Mercedes-Benz

1/2-inch impact socket wrench insert

For TX socket screws, long

- Fits all conventional compressed air and electric drivers
- Standard: Square drive acc. to DIN 3121
- Design: forged, burnished



Tip size	Art. no.	P. Qty./unit
TX30	0715 136 130	1
TX40	0715 136 140	1
TX45	0715 136 145	1
TX50	0715 136 150	1
TX55	0715 136 155	1
TX60	0715 136 160	1
TX70	0715 136 170	1
TX80	0715 136 180	1

Drive	1/2 inch
Drive type	Internal square
Tip type	TX
Length (L1)	78 mm
Blade length (L2)	11.2 mm
Socket wrench external diameter (D1)	25 mm
Material	Steel
Surface	Burnished

Impact socket wrench bit 3/4 inch Mercedes-Benz Atego

Particularly suited to spring struts, nuts etc. of the Mercedes-Benz Atego.



Drive	3/4 inch
Drive type	Internal square
Tip type	Twelve-sided head

Tip size	Length	Product weight (per item)	Art. no.	P. Qty./unit
17 mm	50 mm	200 g	1952 001 209	1
19 mm	50 mm	250 g	1952 001 210	1
30 mm	100 mm	950 g	1952 001 212	1
32 mm	53 mm	400 g	1952 001 211	1
32 mm	100 mm	1000 g	1952 001 213	1

3/4 inch impact socket wrench TX Plus, EPL 32

For loosening and tightening all types of extremely tight screw connections by means of impact screwdriver, ratchet tool, T-handle or sliding handle.

- Particularly suitable for Mercedes Actros front spring bolt, comparable OEM no. A 963 589 00 09 00
- Very durable thanks to high-quality CrMo material
- Suitable for use with impact screwdrivers



Art. no.	1952 001 511
Drive	3/4 inch
Width across flats	32 mm
Length (L1)	62 mm
Socket wrench external diameter (D1)	45 mm
Socket wrench external diameter 2 (D2)	40 mm
Socket wrench depth (t)	18 mm
P. Qty./unit	1

Universal deburring tool Universal deburring tool, large

For deburring, chamfering and repairing damaged threads, screws, pipes etc.

- Blade made of tungsten alloyed steel (HRC 75 UP)

Application area

For stainless steel, hardened steel, copper, brass, wood, fibreglass, hard plastic etc.



Drive	Min. diameter	Max. diameter	Product weight (per item)	Art. no.	P. Qty./unit
1/4 inch	3 mm	19 mm	120 g	1952 001 441	1
5/16 inch	15 mm	35 mm	230 g	1952 001 442	1
5/16 inch	34 mm	54 mm	290 g	1952 001 443	1

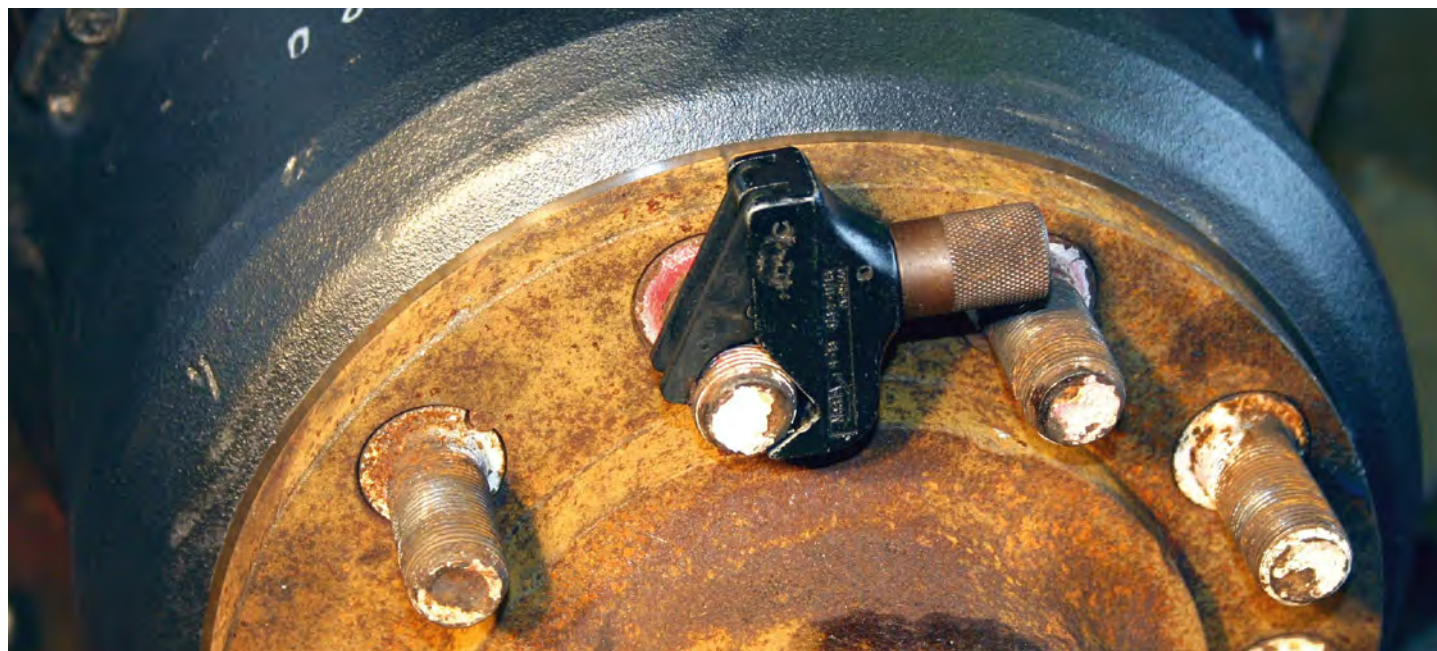
Thread cutter set NES 123

7 pieces For male thread 4–152 mm and 5/32–6 inch.

- Easy to adjust for any thread diameter and pitch
- No further calibration necessary
- Can be used on left-hand and right-hand threads
- For metric and imperial thread standards with a flank angle of 60°
- Scope of delivery:
 - 1 external cutter NES 1A 4-19 mm + 5/32-3/4 inch
 - 1 external cutter NES 2 17-38 mm + 11/16-1 1/2 inch
 - 1 external cutter NES 3 35-152 mm + 1 1/4-6 inch
 - 3 replacement cutting blades (pair)
 - 1 hand deburring tool

Art. no.	1952 001 243
Number of pieces	6 PCS
Min. diameter	4 mm
Max. diameter	152 mm
Min./max. diameter	4-152 mm
Product weight (per item)	4300 g
P. Qty./unit	1





Thread cutter NES 1

For male thread, 4–19 mm metric thread,
5/32–3/4 inch inch thread.

Art. no. 1952 001 270

P. Qty./unit 1



Thread cutter set NES 12

4 pieces. For 4–38 mm and 5/32–1 1/2 inch male thread.

- Easy to adjust for any thread diameter and pitch
- No need to complete calibration work
- Can be used on left-hand and right-hand threads
- For metric and imperial thread standards with a flank angle of 60°
- Scope of delivery:
 - 1 each of NES 1A and NES 2 external thread repair tool
 - 1 each of replacement cutting blades (pair) for NES 1A and NES 2 external thread repair tool



Art. no.	1952 001 412
Number of pieces	4 PCS
Min. diameter	4 mm
Max. diameter	38 mm
Min./max. diameter	4-38 mm
Product weight (per item)	1190 g
P. Qty./unit	1

Thread cutter NES 3

For male thread 35–152 mm and 1 3/8–6 inch.

- Easy to adjust for any thread diameter and pitch
- No calibration necessary
- Can be used on left-hand and right-hand threads
- For metric and imperial thread standards with a flank angle of 60°



Art. no.	1952 001 272
Min./max. diameter	35-152 mm
Product weight (per item)	2000 g
P. Qty./unit	1



Thread cutter NES 2

For 17–38 mm and 11/16–1 1/2 inch male thread.



Art. no.	1952 001 271
Min./max. diameter	17-38 mm
Product weight (per item)	600 g
P. Qty./unit	1

Thread cutter set NES 1025

12 pieces. For 4–38 mm and 5/32–1 1/2 inch male thread, as well as for 8–32 mm and 5/16–1 1/4 inch female thread.

- Easy to adjust for any thread diameter and pitch
- No calibration necessary, can be used on left-hand and right-hand threads
- For metric and imperial thread standards with a flank angle of 60°
- Scope of delivery:
 - 1 each of male thread cutter NES 1A and NES 2
 - 1 each of spare blade for male thread cutter NES 1A and NES 2
 - 1 each of female thread cutter NES 21, NES 22, NES 23, NES 24
 - 1 each of spare blade for female thread cutters NES 21, NES 22, NES 23, NES 24



Art. no.	1952 001 415
Min. diameter	4 mm
Max. diameter	38 mm
Min./max. diameter	4-38 mm
Product weight (per item)	2000 g
P. Qty./unit	1



Thread cutter set NES 1015

8 pieces. For 4–19 mm and 5/32–3/4 inch male thread, as well as for 8–16 mm and 5/16–5/8 inch female thread.

- Easy to adjust for any thread diameter and pitch
- No need to complete calibration work
- Can be used on left-hand and right-hand threads
- For metric and imperial thread standards with a flank angle of 60°
- Scope of delivery:
 - 1 each of NES21 and NES22 internal thread repair tool
 - 1 each of replacement blade for NES21 and NES22 internal thread repair tool
 - 1 each of cover cap for NES 21 and NES 22 internal thread repair tool
 - 1 x NES 1A external thread repair tool
 - 1 x replacement blade for NES 1A external thread repair tool



Art. no.	1952 001 414
Number of pieces	8 PCS
Min. diameter	4 mm
Max. diameter	38 mm
Min./max. diameter	4-38 mm
Product weight (per item)	1000 g
P. Qty./unit	1

Thread cutter set NES 1008

8 pieces. For 8–32 mm and 5/16–1 1/4 inch female thread.

- Easy to adjust for any thread diameter and pitch
- No need to complete calibration work
- Can be used on left-hand and right-hand threads
- For metric and imperial thread standards with a flank angle of 60°
- Scope of delivery:
 - 1 each of N7210, N7220, N7230, N7240 internal thread repair tool
 - 1 x RK 21 60° blade for N7210 internal thread repair tool
 - 1 x RK 22 60° blade for N7220 internal thread repair tool
 - 1 x RK 23 60° blade for N7230
 - 1 x RK 24 60° blade for N7240 internal thread repair tool



Art. no.	1952 001 413
Number of pieces	8 PCS
Min. diameter	8 mm
Max. diameter	32 mm
Min./max. diameter	8-32 mm
Product weight (per item)	1300 g
P. Qty./unit	1

Thread cutter NES 21

For 8–11 mm and 5/16–7/16 inch female thread.

- Easy to adjust for any thread diameter and pitch
- No need to complete calibration work
- Can be used on left-hand and right-hand threads
- For metric and imperial thread standards with a flank angle of 60°

Art. no.	1952 001 416
Min./max. diameter	8-11 mm
Width across flats	5/16 inch, 7/16 inch
Female thread	11 mm
Product weight (per item)	150 g
P. Qty./unit	1



Thread cutter NES 22

For 12–16 mm and 5/32–11/16 inch female thread.

- Easy to adjust for any thread diameter and pitch
- No need to complete calibration work
- Can be used on left-hand and right-hand threads
- For metric and imperial thread standards with a flank angle of 60°

Art. no.	1952 001 417
Min./max. diameter	12-16 mm
Width across flats	5/32 inch, 11/16 inch
Product weight (per item)	150 g
P. Qty./unit	1



Thread cutter NES 23

For female thread 16–20 mm and 11/16–13/16 inch.

- Easy to adjust for any thread diameter and pitch
- No calibration necessary
- Can be used on left-hand and right-hand threads
- For metric and imperial thread standards with a flank angle of 60°

Art. no.	1952 001 418
Min./max. diameter	16-20 mm
Width across flats	11/16 inch, 13/16 inch
Product weight (per item)	220 g
P. Qty./unit	1



Thread cutter NES 24

For 22–32 mm and 7/8–1 1/4 inch female thread.

- Easy to adjust for any thread diameter and pitch
- No calibration necessary
- Can be used on left-hand and right-hand threads
- For metric and imperial thread standards with a flank angle of 60°



Art. no.	1952 001 419
Min./max. diameter	22-32 mm
Width across flats	7/8 inch, 1 1/14 inch
Product weight (per item)	435 g
P. Qty./unit	1



Thread cutter NES 25

For female thread 32–54 mm and 1 1/4–2 1/8 inch.

- Easy to adjust for any thread diameter and pitch
- No calibration necessary
- Can be used on left-hand and right-hand threads
- For metric and imperial thread standards with a flank angle of 60°



Art. no.	1952 001 420
Min./max. diameter	32-54 mm
Product weight (per item)	920 g
P. Qty./unit	1





Double open-end wrench Ultra-thin

Universal double open-end wrench in ultra-thin design for confined spaces.

Width across flats	Height	Length	Product weight (per item)	Art. no.	P. Qty./unit
6 x 7 mm	2.1 mm	150 mm	20 g	1952 001 377	1
8 x 9 mm	2.6 mm	175 mm	30 g	1952 001 378	1
10 x 11 mm	2.8 mm	210 mm	40 g	1952 001 379	1
12 x 13 mm	3.6 mm	210 mm	80 g	1952 001 380	1
14 x 15 mm	3.6 mm	210 mm	80 g	1952 001 381	1
16 x 17 mm	4.6 mm	250 mm	170 g	1952 001 382	1
18 x 19 mm	4.7 mm	250 mm	170 g	1952 001 383	1
20 x 22 mm	5.6 mm	290 mm	299 g	1952 001 385	1
21 x 23 mm	5.6 mm	290 mm	270 g	1952 001 386	1
22 x 24 mm	5.6 mm	290 mm	150 g	1952 001 387	1
24 x 27 mm	7.2 mm	240 mm	530 g	1952 001 505	1
25 x 28 mm	7.2 mm	340 mm	515 g	1952 001 506	1
30 x 32 mm	8.2 mm	380 mm	750 g	1952 001 507	1



Application area

Suitable for ball fitting on stabiliser rods for connection pieces between hose couplings, brake piston resetting tool as well as screw connections on constricted air and oil pipes.

Double open-end wrench set Ultra-thin

3 pieces. Universal double open-end wrench in ultra-thin design for confined spaces.

- The foam insert is suitable for storage in system case 8.4.

Contents for art. no.	
1952 001 447	Double open-end wrench Ultra-thin: 1 x 24 x 27 mm, 1 x 25 x 28 mm, 1 x 30 x 32 mm

Art. no.	1952 001 447
Number of pieces	3 PCS
Product weight (per item)	2600 g
P. Qty./unit	1



Application area

Suitable for ball fitting on stabiliser rods for connection pieces between hose couplings, brake piston resetting tool as well as screw connections on constricted air and oil pipes.

Double open-end wrench set Ultra-thin

4 pieces. Universal double open-end wrench in ultra-thin design for confined spaces.

- The foam insert is suitable for storage in system case 8.4.



Contents for art. no.	
1952 001 388	Double open-end wrench Ultra-thin: 1 x 18 x 19 mm, 1 x 20 x 22 mm, 1 x 21 x 23 mm, 1 x 22 x 24 mm

Art. no.	1952 001 388
Number of pieces	4 PCS
Product weight (per item)	820 g
P. Qty./unit	1



Application area

Suitable for ball fitting on stabiliser rods for connection pieces between hose couplings, brake piston resetting tool as well as screw connections on constricted air and oil pipes.

Double open-end wrench set Ultra-thin

6 pieces. Universal double open-end wrench in ultra-thin design for confined spaces.

- The foam insert is suitable for storage in system case 8.4.

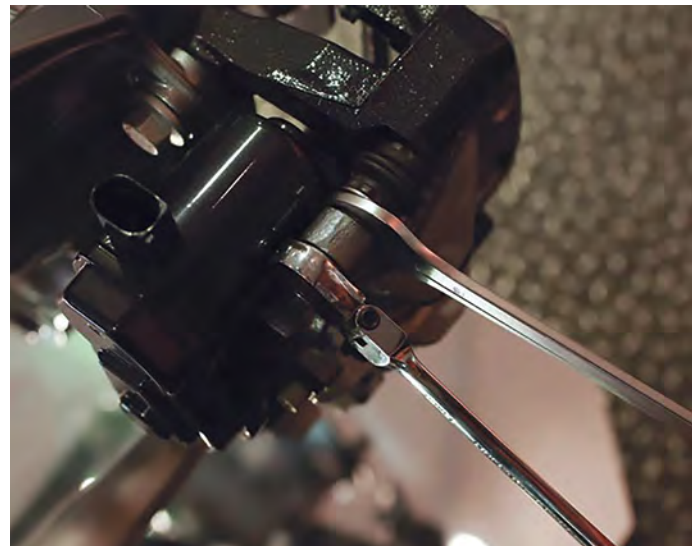


Application area

Suitable for ball fitting on stabiliser rods for connection pieces between hose couplings, brake piston resetting tool as well as screw connections on constricted air and oil pipes.

Contents for art. no.	
1952 001 389	Double open-end wrench Ultra-thin: 1 x 6 x 7 mm, 1 x 8 x 9 mm, 1 x 10 x 11 mm, 1 x 12 x 13 mm, 1 x 14 x 15 mm, 1 x 16 x 17 mm

Art. no.	1952 001 389
Number of pieces	6 PCS
Product weight (per item)	523 g
P. Qty./unit	1





Clamping wrench universal

Self-clamping quick-action wrench for width across flats 8-32 mm.

- Particularly suitable for inaccessible places thanks to the self-clamping, movable part of the wrench in the direction of rotation and sufficient grip even with strongly rounded hexagonal heads
- Particularly durable thanks to high-quality, forged CrV material
- Small clamping head from 8-17 mm (5/16-11/16 inch), large clamping head from 14-32 mm (9/16-1 1/4 inch)



Application area

Particularly suitable for ball fittings on stabilizer rods, connectors between hose fittings, fittings on confined air and oil lines, compressed air accumulators, etc.

Art. no.	1952 001 510
P. Qty./unit	1



Universal crow wrench set 2 pcs

Extremely versatile wrench for opening hard-to-reach or worn hexagonal/twelve-sided screw connections.

- Particularly suitable for inaccessible places thanks to the movable pliers part which is self-clamping in the direction of rotation
- Sufficient hold even with strongly rounded hexagonal heads
- Particularly durable due to high-quality, forged CrV material
- Scope of delivery:
 - 1 small clamping head SW 8-17 mm (5/16-11/16 inch), drive 3/8 inch, length 80 mm
 - 1 large clamping head SW 14-32 mm (9/16-1 1/4 inch), drive 1/2 inch, length 120 mm



Application area

Particularly suitable for ball fittings on stabilizer rods, connectors between hose fittings, fittings on confined air and oil lines, compressed air accumulators, etc.

Art. no.	1952 001 508
P. Qty./unit	1

Combination wrench

Oversized wrench for use in the commercial vehicles sector.

- Standard: DIN 3113, ISO 3318, ISO 7738

Width across flats	Length	Art. no.	P. Qty./unit
46 mm	520 mm	0997 455 612	1
50 mm	500 mm	0997 018 672	-
55 mm	500 mm	0997 018 673	-
60 mm	600 mm	0997 168 534	-
65 mm	710 mm	0997 155 770	1
70 mm	760 mm	0997 155 781	1
75 mm	810 mm	0997 250 016	1
80 mm	860 mm	0997 250 017	1



Open-end slugging wrench

For releasing connection elements that are difficult to release.



Width across flats	Length	Art. no.	P. Qty./unit
75 mm	375 mm	0997 249 776	1
80 mm	405 mm	0997 249 777	1
85 mm	405 mm	0997 068 018	1
90 mm	445 mm	0997 249 778	1
95 mm	445 mm	0997 249 779	1
100 mm	485 mm	0997 249 766	1



Slugging box wrench

- For extremely heavy-duty, impact-like stress
- Special steel
- DIN 7444

Length: 420 mm

Art. no. 1952 000 702

P. Qty./unit 1

Length: 330 mm

Art. no. 1952 000 703

P. Qty./unit 1

Length: 360 mm

Art. no. 1952 000 704

P. Qty./unit 1

Length: 360 mm

Art. no. 1952 000 705

P. Qty./unit 1

Length: 390 mm

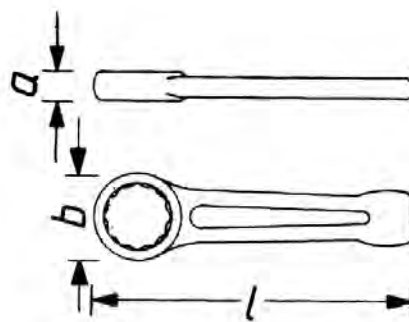
Art. no. 1952 000 706

P. Qty./unit 1

Length: 390 mm

Art. no. 1952 000 707

P. Qty./unit 1



3/4-inch articulated face wrench

For opening and closing double pin wrenches.

- The internal square mount enables high power transmission and is thus suitable for operation with a torque wrench
- The wrench is made from hardened special steel, which has a burnished finish and is therefore protected against corrosion
- The hardened pins are interchangeable and are therefore not included in the scope of delivery



Drive	3/4 inch
-------	----------

Min./max. diameter	Product weight (per item)	Art. no.	P. Qty./unit
40-80 mm	315 g	1952 001 421	1
80-125 mm	1200 g	1952 001 422	1



Supplied without journals

Sorting box with loose pins for articulated face wrench

15 pieces. Clear, transparent and resealable sorting box with pins and nuts for articulated face wrench.

- All pins are made of special steel and feature a burnished finish.
- Scope of delivery:
 - 2 each of pins Ø 4, 5, 6, 7, 8 mm
 - 5 x DIN 439, M6 x 10 nuts



Art. no.	1952 001 423
Number of pieces	20 PCS
Product weight (per item)	95 g
P. Qty./unit	1

Jointed hook wrench with pin

For safe and damage-free disassembly and assembly of DIN 1816 capstan nuts and setting steering head bearings.



Surface	Burnished
---------	-----------

Min. clamping width	Max. clamping width	Min./max. clamping width	Length	Tenon diameter	Product weight (per item)	Art. no.	P. Qty./unit
22 mm	35 mm	22-35 mm	150 mm	2.9 mm	100 g	1952 001 429	1
35 mm	60 mm	35-60 mm	170 mm	4 mm	65 g	1952 001 430	1
60 mm	90 mm	60-90 mm	250 mm	5.5 mm	270 g	1952 001 431	1
95 mm	155 mm	95-155 mm	290 mm	6 mm	450 g	1952 001 432	1
155 mm	230 mm	155-230 mm	390 mm	9.5 mm	1176.4 g	1952 001 433	1

Jointed hook wrench with nose

For safe and damage-free disassembly and assembly of DIN 1804 roller bearing nuts.

- With a hanging hole
- Extended hook and Shank
- Extra reinforced rivet
- Rounded edges for a improved and optimised handling



Surface	Burnished
---------	-----------

Min. clamping width	Max. clamping width	Min./max. clamping width	Length	Product weight (per item)	Art. no.	P. Qty./unit
20 mm	35 mm	20-35 mm	135 mm	50 g	1952 001 434	1
35 mm	60 mm	35-60 mm	175 mm	10 g	1952 001 435	1
60 mm	90 mm	60-90 mm	250 mm	355 g	1952 001 436	1
90 mm	155 mm	90-155 mm	290 mm	450 g	1952 001 437	1
155 mm	230 mm	155-230 mm	420 mm	1200 g	1952 001 438	1



Universal press table base, 30 tonnes

Support plate for use on workshop presses for disassembly and assembly work with 45 position points.

- Universal 3-point support guarantees tilt and clearance-free application
- With height-adjustable location pins



Art. no.	1952 001 426
Max. loading weight	30 t
Product weight (per item)	3500 g
P. Qty./unit	1



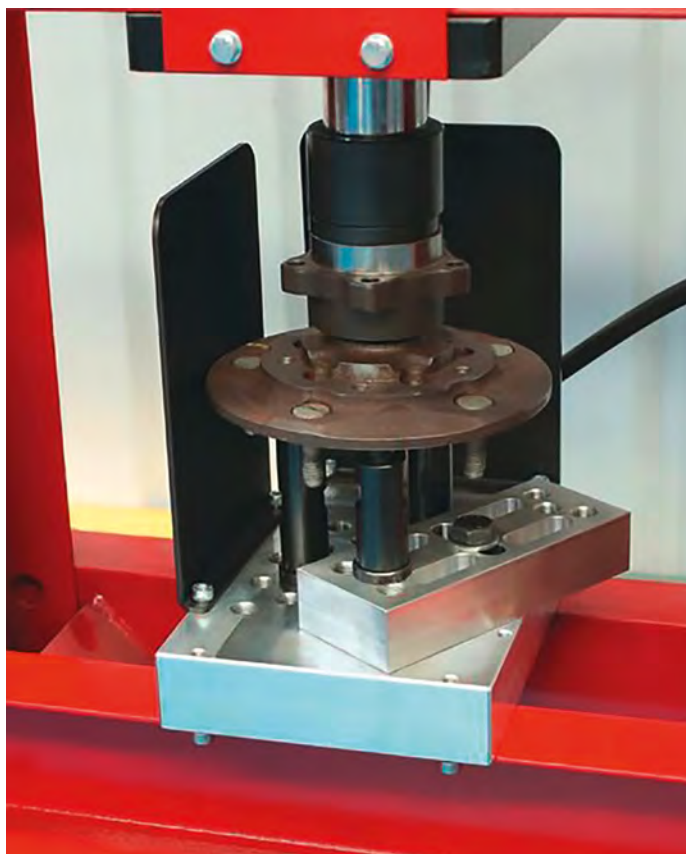
Video, endoscope PRO PRO

10 pieces. For perfect examination and documentation in inaccessible places, for the automotive, plumbing, construction, industrial, aviation, police, and customs sectors via video recording and/or imaging. With 5.5 mm x 1 m semi-rigid probe.

- „Live“ observation via the TFT colour display or recording straight to the SD card in the multifunctional console
- Recording function: Image in JPG and film in NTSC or PAL format
- High-power battery: Two hours of charging, four hours of continuous use
- Optimal image quality with four bright and dimmable mini LEDs
- Portable, network-neutral system
- Option of transmission via USB connection
- Direct connection via AV jack and connection cable
- Probes with scratch-proof sapphire glass for high image quality and to protect camera and lens
- Various mirror attachments for optimum viewing angle
- Digital zoom function and mirror imaging



Art. no.	0715 53 761
Width	72 mm
Height	200 mm
Min./max. temperature conditions	0 to 55 °C
Type of rechargeable battery/battery	Lithium
Product weight (per item)	2242 g
P. Qty./unit	1



Universal press table base, 50 tonnes

Support plate with reinforced supports for use on workshop presses for disassembly and assembly work with 45 position points.

- Side protection panels for greater safety
- Safety retaining screws prevent the block from slipping on the press
- Universal 3-point support guarantees tilt and clearance-free application
- With height-adjustable location pins



Art. no.	1952 001 427
Length	285 mm
Width	200 mm
Height	50 mm
Max. loading weight	50 t
Product weight (per item)	7500 g
P. Qty./unit	1

SPECIAL TOOLS

For the commercial vehicle sector

Adolf Würth GmbH & Co. KG
74650 Künzelsau
Tel. +49 7940 15-0
Fax +49 (0)7940 15-1000
info@wuerth.com
www.wuerth.de

