

# VEHICLE EQUIPMENT





# EVERYTHING FROM A SINGLE SOURCE WITH MANY ADVANTAGES TO YOU



#### Top quality from our own development and production.

There are several aspects to the quality of our vehicle equipment. Durability is one of these, ergonomics and efficient working procedures are others. In addition there is, among other things, low weight combined with maximum stability. In all, it amounts to maximum utility benefit - day in, day out and over a very long period.



#### Consultation and planning with a high degree of industry competence.

Our consultants come from different branches of the trade. With this experience and state-of-the-art planning software, we can tailor individual equipment quickly and without complications. This makes our our vehicle equipment much more than just "shelves on wheels". They are well thought-out transport and work systems.



#### The priority is safety.

It goes without saying that as the driver of a transporter with some heavy material behind the driver's seat, you want to feel safe. You and your colleagues are well protected in our vehicle equipment, and the material you are transporting is optimally stowed. We conduct permanent tests in order to optimize all safety-relevant parts and technologies.

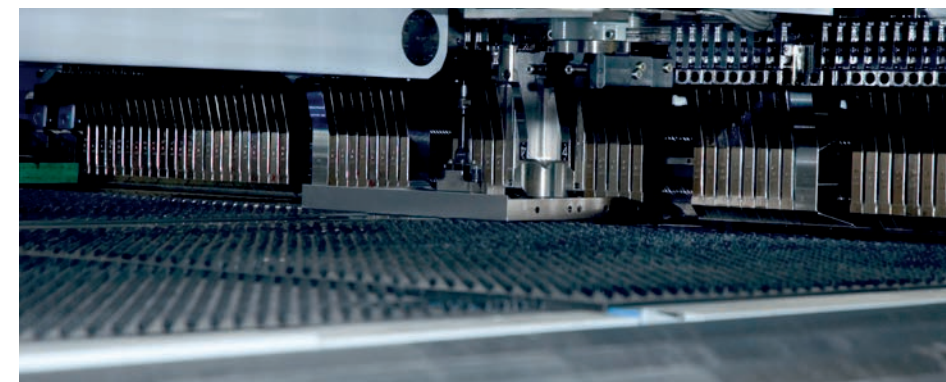
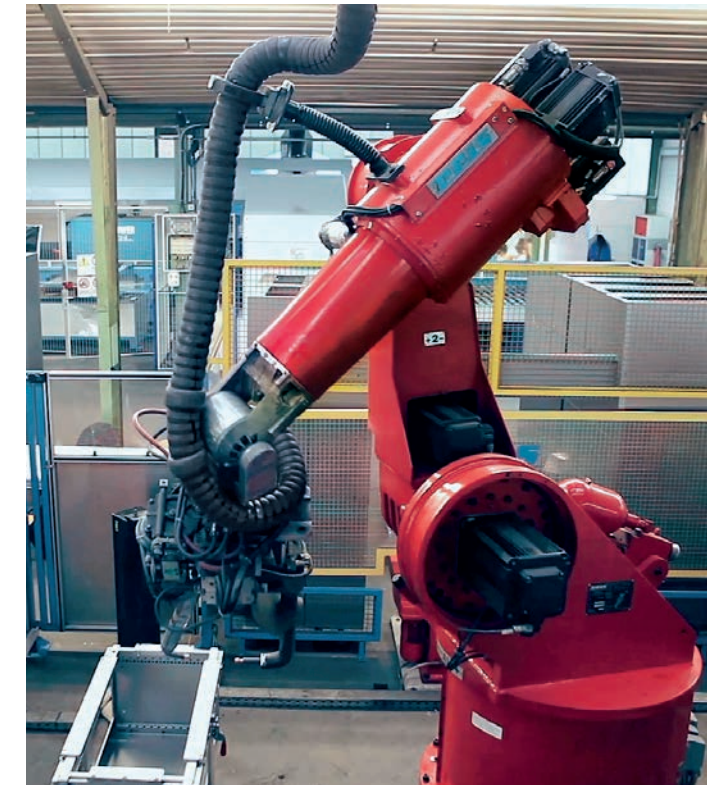
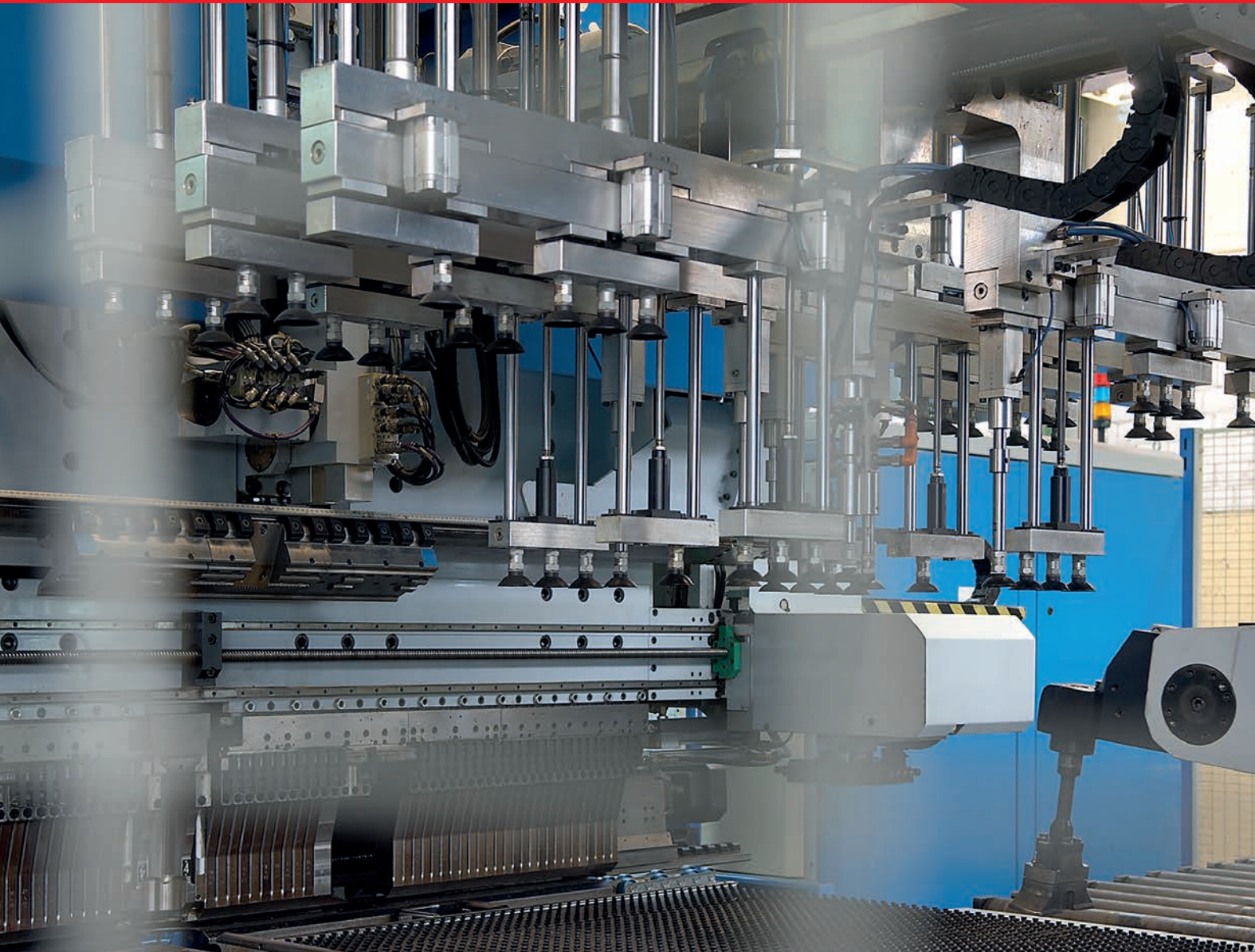


#### We are never far away from you.

To us, closeness to the customer is more than just a slogan, and it also means much more than physical proximity and accessibility. 40 sales specialists are at your service almost round the clock. We also have about 400 branches throughout Germany



# PRECISE PRODUCTION MAXIMUM QUALITY



**Our vehicle equipment is developed in-house and is manufactured by a Würth Group subsidiary.**

Decades of experience with customers from all branches of the trade and professionals are incorporated into the development of our systems. In production, they become a top-quality reality through the use of reliable materials. For this we have at our disposal state-of-the-art production systems such as fully-automatic punching and bending centers, as well as several spot-welding and welding robots. The result of this precision technology and the certification of the quality management system in accordance with ISO 9001 is a high-quality final product every time. In addition to development and production, we are constantly optimizing our environmental protection efforts. In powder coating for example, we use no solvents, and we combine lead-free and cadmium-free powder with responsible recovery.

In our state-of-the-art bending center, we manufacture vehicle equipment of the highest precision.

Our own powder-coating system allows efficient, resilient and especially environmentally-friendly painting.

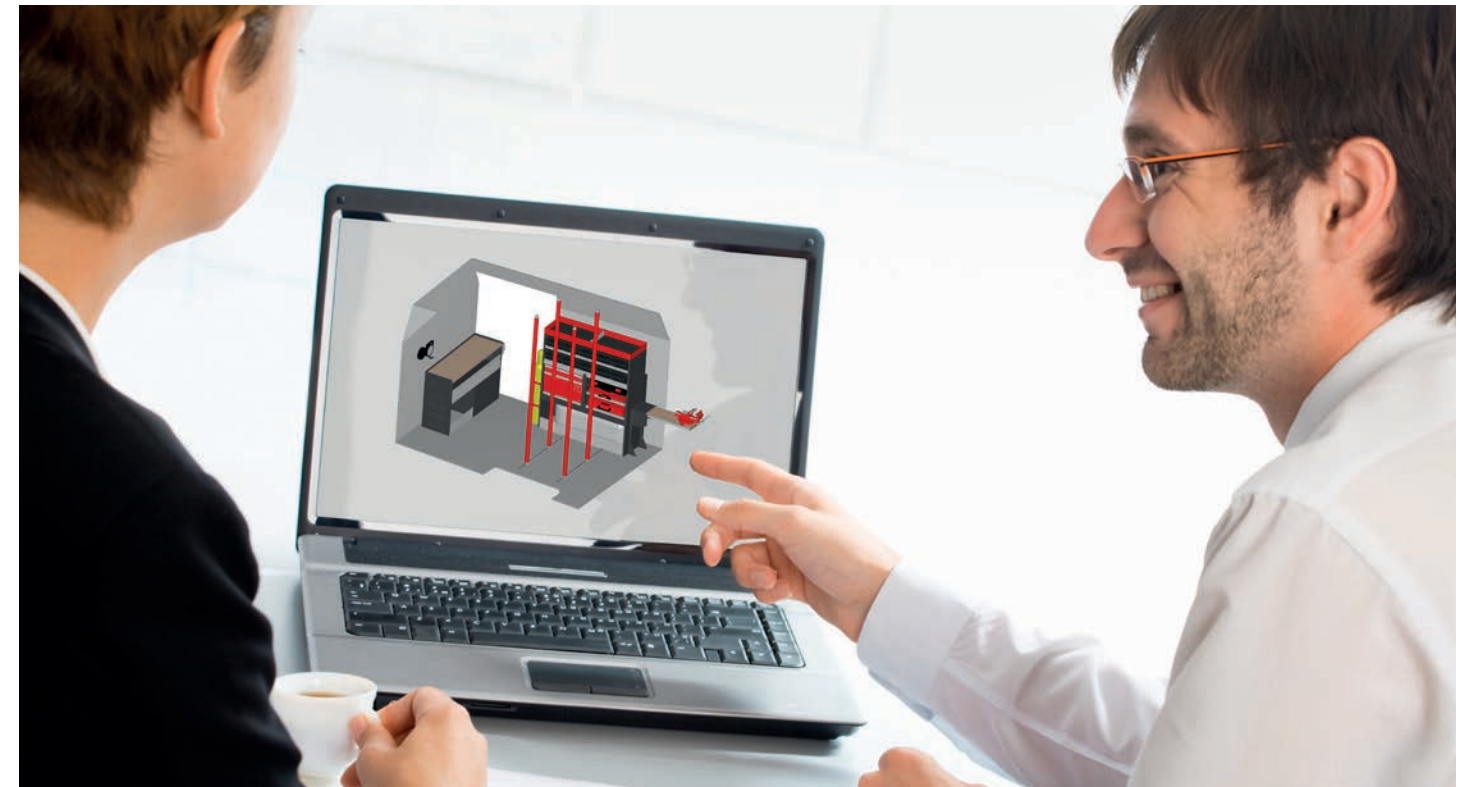


# PERSONAL CONSULTATION INDIVIDUAL PLANNING



**Due to the specific requirements of individual sectors and customers, the ideal vehicle equipment doesn't come "off the peg".**

Our task is to optimize the space in the vehicle to suit your work procedures. To this end, your sales specialist will advise you in detail and will look for the best possible solution to suit your individual needs. We employ 3D planning to visualize your specifications precisely and unambiguously, and you get a clear picture of your future equipment solution. You can examine the implementation of the various solutions directly in our demonstration vehicles. Your equipment will then be installed directly on your premises by our long-standing installation partner. There is no need to transport your vehicle to an installation station.



We use 3D planning to arrive at the ideal equipment solution for the customer quickly and without complications.



With many practical equipment details, we simplify work procedures and make life that little bit more comfortable.



For further information, visit [www.orsymbol.com](http://www.orsymbol.com)



# MAXIMUM SAFETY

# INNOVATIVE

# ENVIRONMENTAL

# MANAGEMENT



**For our vehicle equipment, that means:**

- Crash test for all equipment lines
- Assured pull values for all rail systems
- Marking the loading weight in the drawers
- Floor panels made from sustainable raw materials with the blue eco-angel
- Powder coating without solvent
- Tested products for securing loads
- Seminars at the Würth Academy on how to secure loads
- isi! Hazardous materials management also for vehicles
- Cost center management for the vehicle

Find out more at: [www.orsymobil.com](http://www.orsymobil.com)

**Every day on Germany's roads there are thousands of vehicles with our equipment.**

The drivers of the vehicles, as well as other road users, can be assured that all our efforts go into their keeping them safe. Our vehicle equipment undergoes many tests, in addition to which we promote safety with load-securing products and seminars.

**Besides safety, ecology is another permanent part of our company culture.**

Würth environmental management has been certified since 1996. We always adhere to the principles of the social market economy, people's health and the environment. Which is why we are constantly improving our performances.

Find out more at [wuerth.de/Unternehmen/Qualitäts- und Umweltmanagement](http://wuerth.de/Unternehmen/Qualitäts- und Umweltmanagement).



# THE MODULAR VEHICLE EQUIPMENT MADE OF STEEL – EXTREMELY ROBUST FOR MAXIMUM LOAD- BEARING CAPACITY!

In sectors such as the building and civil engineering industry and finishing trades, the mechanical load on the vehicle equipment is particularly high. The modular vehicle equipment comprised of high-strength structural steel elements is ideal for these requirements. Maximum load-bearing capacity and stability are characteristic of this model as much as the individually achievable special solutions.



Just as robust as all the vehicle equipment, the pull-out work bench provides enough space for safe working.



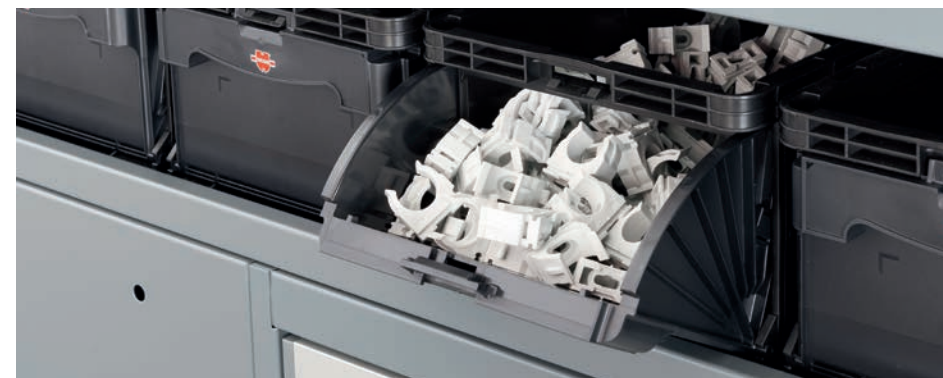
Safe storage and organization: Many inserts and orderly sorting systems, along with the patented locking system for the drawers, make sure that your goods remain where they are supposed to be during transport.



Quick opening across the entire width The functional drawer handle enables any drawer to be opened any closed anywhere – without the need to fumble around with small, inconvenient handles.



The practical hinged flaps of the shelves are opened with a handle. Like the covers and the drawer handles, they are made of high-quality anodized aluminum.



Storage box shelves make the storage of small parts in the transporter clear. The boxes fixed in the shelves provide order, and the patented front flap allows easy access.



Longitudinal modules provide convenient access from the side door.



# THE VARIABLE VEHICLE EQUIPMENT MADE OF ALUMINUM, STEEL AND PLASTIC FOR MAXIMUM INDIVIDUALITY WITH LOW WEIGHT!

The variable vehicle equipment can be adapted right down to the smallest detail to your working procedures and the stored items. This makes optimum use of the limited space on the vehicle. This maximum flexibility is achieved with five standard widths, three depths and 30 mm height units. The intelligent material mix of aluminum, steel and plastic also saves on weight, and this in turn helps to keep fuel costs down.



Tension straps that can be fixed on the load securing rails, plus further accessories that can be secured on the upright frames add even more value to the system.



Quick opening across the entire width The functional drawer handle enables any drawer to be opened and closed anywhere - without the need to fumble around with small, inconvenient handles.



The practical hinged flaps of the shelves are opened with a handle. Like the covers and the drawer handles, they are made of high-quality anodized aluminum.



Safe storage and organization: Many inserts and orderly sorting systems, along with the patented locking system for the drawers, make sure that your goods remain where they are supposed to be during transport.



Storage box shelves make the storage of small parts in the transporter clear. The boxes fixed in the shelves provide order and allow quick access.



The workbench always travels along: It takes up hardly any room in the vehicle itself, and at the place of use it can be pulled out as required with a few quick hand movements and secured with the quick-action retainer.



# EQUIPMENT EXAMPLES



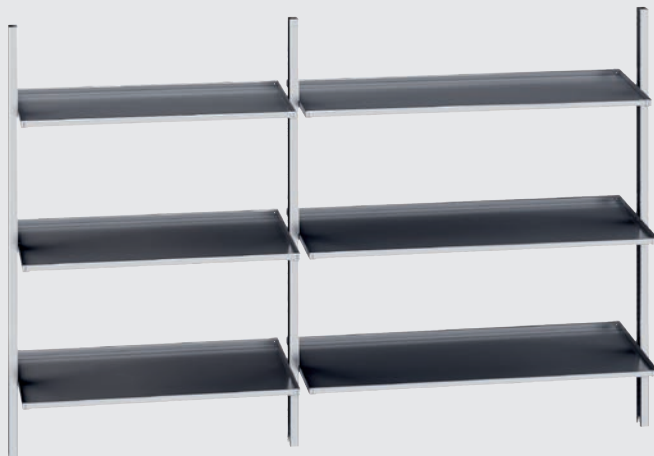
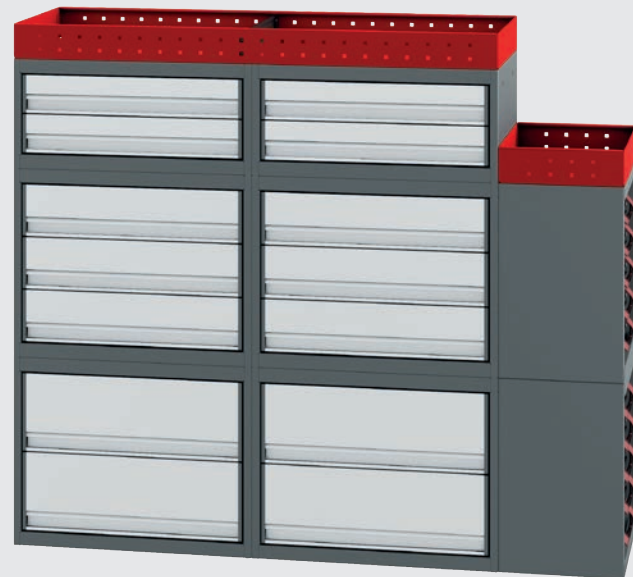
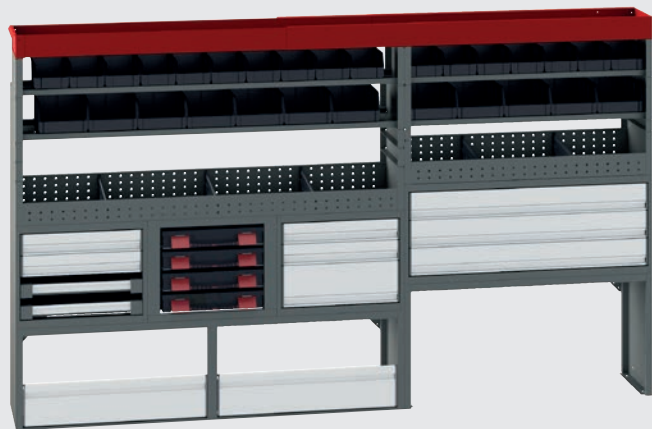


# EQUIPMENT EXAMPLES





# EQUIPMENT EXAMPLES





# SPECIAL PRODUCTS FOR ALMOST ALL VEHICLE MANUFACTURERS AND VEHICLE TYPES



Aluminum Support Beam



Load Carrier



Ladder Lift



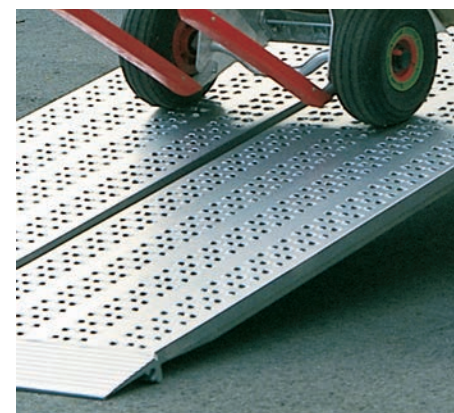
Transport and Loading Tube



Ladder Clamping System



Step Tread



Loading Aids



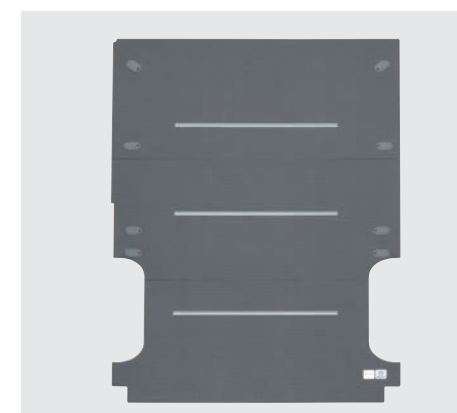
Tool and Transportation Bin



Toolbox



Outer side rack



Bottom plate



Side wall lining



# SPECIAL SOLUTIONS WELL THOUGHT OUT DOWN TO THE SMALLEST DETAIL



**Special tasks demand special solutions.** Most of these are already covered by the modularity and variability of our vehicle equipment. However, there may be more as the examples presented here illustrate.

**Manufacturer solutions: The Würth equipment suits it perfectly.** Whether you choose a Mercedes, a VW, Ford or Opel, a Fiat, Renault, Peugeot or Citroën is your decision. We have tailored our equipment systems and modules to the vehicle types of all leading manufacturers.

**Your vehicle equipment in your own corporate design.** Würth vehicle equipment is available in all standard RAL colors – for your company's perfect image.



VW Amarok



Service vehicles



Solar installers



Ford Ranger



Piaggio





# VEHICLE EQUIPMENT

Adolf Würth GmbH & Co. KG  
Vehicle Equipment  
Dimbacher Straße 42  
74182 Obersulm-Willsbach  
Phone: +49 7134 9834-0  
Fax: +49 7134 9834-22  
info@orsymobil.de  
www.orsymobil.com

© by Adolf Würth GmbH & Co. KG  
Printed in Germany  
All rights reserved.  
Responsible for the content:  
Dept. VLO/Ercan Türkoglu  
Editor: Dept. GMV/Anja Fenzl-Weisler

Reproduction in whole or in part is permitted only with permission.  
GMV-die3-10/14

We reserve the right to make product changes at any time that we feel provide a quality improvement, even without prior announcement or notification.  
Illustrations may be example illustrations that might differ in appearance from the goods supplied. All rights reserved including errors. We accept no liability for misprints.  
Our general terms and conditions apply.

